



Unication

ALPHA

ELEGANT/ LEGEND

PROGRAMMING GUIDE

www.uni.com.tw

SOFTWARE LICENSE AGREEMENT

1. LICENSE GRANT

In connection with the transfer of possession of the software package provided with this Agreement, Unication, (LICENSOR) hereby grants to possessor (LICENSEE) a non-exclusive license to use the software program(s) (SOFTWARE) and documentation (DOCUMENTATION) of said software package with a single-user computer system. LICENSEE may, upon requesting and receiving written permission of LICENSOR, transfer possession of the software package including SOFTWARE and DOCUMENTATION and transfer this license to another party if the other party agrees in writing to accept the terms and conditions of this agreement.

2. OWNERSHIP

LICENSEE is given possession of a program module(s) with the software package in or on which Software is copied, but title to the SOFTWARE and DOCUMENTATION, all copies thereof and all rights therein, including all rights in the patents, copyrights, and trade secrets applicable thereto, shall remain vested in LICENSOR, regardless of the form or media in or on which the original and other copies of software and documentation may subsequently exist. Nothing contained herein shall be deemed to convey any title or owner-ship interest in the program module(s), SOFTWARE or DOCUMENTATION to LICENSEE.

LICENSEE agrees not to disclose, transfer, provide on any form, except as otherwise provided in this agreement, the software package or any portion thereof, to any person other than employees of LICENSEE without prior written consent of LICENSOR, and any such disclosure or transfer shall be consistent with the use in the single-user computer system.

LICENSEE agrees not to reverse compile or disassemble SOFTWARE.

LICENSEE agrees that it will not in any form, export, re-export, resell, ship, or divert or cause to be exported, re-exported, resold, shipped, or diverted, directly or indirectly, the SOFTWARE and DOCUMENTATION or a direct product thereof to any country for which the United States government or any agency thereof at the time of export or re-export requires an export license or other government approval without first obtaining such license or approval.

3. COPYING RIGHTS

LICENSEE may make copy(s) of SOFTWARE and DOCUMENTATION, required for backup or modification purposes in support of the use of the SOFTWARE with the single-user computer system, but LICENSEE must include existing copyright notices on any such copy, modifications, or portion of SOFTWARE merged into another program. Such notice(s) may appear in several forms, including machine-readable form, and LICENSEE agrees to reproduce such notice(s) in each form in which it appears, to the extent it is physically possible to do so.

4. TRANSFERABILITY

LICENSEE may not transfer SOFTWARE and DOCUMENTATION, or any copy(s) thereof, in whole or in part, except as expressly provided in this agreement. If Licensee transfers SOFTWARE and DOCUMENTATION to another party as expressly provided in this agreement, LICENSEE must at the same time either transfer all copies whether printed or machine-readable form to the same party or destroy any copies not transferred; this includes all modifications and portions of SOFTWARE contained or merged into another program.

If LICENSEE transfers SOFTWARE and/or DOCUMENTATION or any copy, modification, or merged portion of SOFTWARE to another party without written permission of LICENSOR, this license is automatically terminated.

5. TERM

The term of this license agreement is for as long as LICENSEE uses the SOFTWARE for its intended purpose. This agreement may be terminated by LICENSEE upon one month's prior written notice. LICENSOR may terminate this agreement if LICENSEE is in default of any of the terms and conditions of this agreement, and termination is effective if LICENSEE fails to correct such default within thirty (30) days after written notice thereof by LICENSOR.

Within one month after termination of this agreement, LICENSEE will certify to LICENSOR in writing that through its best efforts, and to the best of its knowledge, the original and all copies, in whole or in part, in any form, of the SOFTWARE and DOCUMENTATION have been destroyed or returned to LICENSOR.

6. ASSIGNMENT, SUBLICENSE, OR TRANSFER

LICENSEE shall not (by contract, operation of law, or otherwise) assign, sublicense under or transfer this agreement for any right of interest in this agreement, or delegate performance of any of its obligations under this agreement, without the prior written consent of the LICENSOR. Any such assignment, sublicense, transfer, or delegation without the LICENSOR's prior written consent shall be voidable at the LICENSOR's option.

7. WARRANTY AND MAINTENANCE

LICENSOR warrants that under normal use, SOFTWARE shall perform the functions specified in its DOCUMENTATION. If SOFTWARE does not conform to its DOCUMENTATION such that its functional performance is significantly affected and LICENSOR is notified promptly, in writing, within ninety (90) days from the date of shipment of the software package, LICENSOR will correct such nonconformance by repair, or at its option, make available a replacement program module(s) providing there is no misuse of the nonconforming program module(s).

If LICENSOR or its distributor is unable to deliver a replacement module(s) having SOFTWARE which conforms substantially to its DOCUMENTATION, LICENSOR may terminate this license by providing a refund to LICENSEE upon LICENSEE's return of such program modules, except as provided in Section 3 above, any modification in SOFTWARE by LICENSEE or third parties shall void this warranty.

LICENSOR does not represent or warrant that the SOFTWARE or DOCUMENTATION furnished hereunder is free of infringement of any of the third parties, copyrights, trade secrets, or other intellectual property rights.

LICENSOR shall not be responsible for maintenance or field service of the program module(s) and SOFTWARE under this agreement.

THE FOREGOING WARRANTIES ARE EXCLUSIVE AND IN LIEU OF ALL OTHER WARRANTIES WHETHER STATUTORY, EXPRESS OR IMPLIED (INCLUDING ALL WARRANTIES OF MERCHANTABILITY AND FITNESS FOR A PARTICULAR PURPOSE AND ALL WARRANTIES ARISING FROM COURSE OR DEALING OR USAGE OF TRADE) WITH RESPECT TO THE PROGRAM MODULE(S), SOFTWARE, OR DOCUMENTATION FURNISHED BY LICENSOR UNDER THIS AGREEMENT OR ANY USE OF SUCH SOFTWARE OR DOCUMENTATION BY THE LICENSEE.

The remedies provided above are the LICENSEE's exclusive remedies for any failure of LICENSOR to meet its warranty obligations. Actions by LICENSOR in the manner provided above shall constitute complete fulfillment of all the warranty liabilities of LICENSOR whether the claims of the LICENSEE are based on contract, in tort (including negligence and strict liability, or otherwise with respect to or arising out of the program module(s), SOFTWARE or DOCUMENTATION furnished hereunder.

8. LIMITATION OF LIABILITY

LICENSOR, its subcontractors and suppliers of any tier, shall not be liable in contract, in tort (including negligence and strict liability), or otherwise for damages or loss of other property or equipment, loss of profits or revenue, loss of use of equipment or power system, cost of capital, cost of purchased or replacement power or temporary equipment (including additional expenses incurred in using existing facilities), claims of customers of the LICENSEE, or for any special, indirect incidental or consequential damages whatsoever.

The remedies of the LICENSEE set forth herein are exclusive where so stated and the total cumulative liability of the LICENSOR with respect to this agreement, or anything done in connection therewith, whether in contract, in tort (including negligence and strict liability) or otherwise, shall not exceed the price of the product in which such liability is based.

9. NOTICE

All notices in connection with this agreement shall be in writing and shall be given by certified mail, return receipt requested, at the following address: Unication co.,Ltd., 3F 6 Wu Kung 5th RD.Wu Ku IND., TW 242 ATTENTION: Group Patent Counsel.

10. GOVERNING LAW

This agreement shall be governed and interpreted by the laws of the state of Texas.

11. AGREEMENT

LICENSEE ACKNOWLEDGES THAT THIS AGREEMENT HAS BEEN READ AND UNDERSTOOD AND AGREES TO BE BOUND BY ITS TERMS AND CONDITIONS. LICENSEE FURTHER AGREES THAT THIS AGREEMENT CONSTITUTES THE ENTIRE UNDERSTANDING OF LICENSEE AND LICENSOR WITH RESPECT TO THE SUBJECT MATTER HEREOF AND COMPLETELY SUPERCEDES ANY PRIOR UNDER-STANDINGS, EITHER ORAL OR WRITTEN. ANY MODIFICATION OF THIS AGREEMENT SHALL BE MADE ONLY BY MUTUAL AGREEMENT AND EVIDENCED BY WRITTEN AMMENDMENT SIGNED BY BOTH LICENSOR AND LICENSEE.

Computer Software Copyrights

The Unication products described in this manual may include copyrighted Unication computer programs stored in semiconductor memories or other media. Laws in the United States and other countries preserve for Unication, Inc., certain exclusive rights for copyrighted computer programs, including the exclusive right to copy or reproduce in any form the copyrighted computer program. Accordingly, any copyrighted Unication computer programs contained in the Motorola products described in this manual may not be copied or reproduced in any manner to the extent allowed by law without the express written permission of Unication, Inc. Further more, the purchase of Unication products shall not be deemed to grant either directly or by implication, estoppels, or otherwise, any license under the copyrights, patents or patent applications of Unication, Inc., except for the normal, non-exclusive, royalty-

Contents

Scope Of This Manual	1
Information Presentation	1
Getting Started	2
Equipment Required	2
Equipment Setup	3
Preparing a Elegant and Legend for Reading or Programming	4
Installing The Software	5
Installation Parameters	5
Using Your PPS	9
Overview for Programming a Pager	9
Getting Help	9
Main Menu	10
File Menu	12
Load Codeplug	12
Save Codeplug	13
Setup Menu	14
Port Selection	14
Setup Options	14
Stay On Top	16
Program Menu	17
Read Pager	17
Write Pager	17
Service	18
Program Single	18
Program Sequential	19
Set To Defaults	19
Help Menu	20
Help	20
About	20
Service Menu	21
Service Test Options	25
Adjust Hardware Tuned Values	26
General Options	28
Code Options	30
Prompts	32
Alert Options	34
Password/OTA Programming Options	39
Features Options	41
More Features	44
Technical Description	47
Parts Replacement	48
Exploded View Diagram and Parts List	49
Glossary	54


Scope Of This Manual

This pager programming guide contains five sections to assist you in the use of the Elegant and Legend Pager Programming Software (PPS):

- Getting Started - information about equipment requirements, installation, setup, and use of the software.
- Using Your PPS - the sequence of screens used to read and program one or more pager(s).
- Technical Description - a description of the Pager Mechanical Interface.
- Troubleshooting Guide - a listing of common questions/problems and their solutions.
- Glossary - technical terms used in this guide.

Information Presentation

This manual presents different types of information in different ways:

- Information that you need to type is printed in **boldface type**.
- When information from the screen is referred to in the text, **it looks like this**.
- When you need to press a key on the keyboard, the key is represented graphically. For example, instead of "Press the Enter Key"; you will see " Press " 

Special characters are used to emphasize certain conditions.



Note: Emphasizes additional information pertinent to the subject matter.



Caution: Emphasizes information about actions which may result in equipment damage.



Warning: Emphasizes information about actions which may result in personal injury.

Field Description Information

Any screen that contains fields is followed by a table of field descriptions. These tables are divided into two columns:

1. **Field Name** – shown exactly the way it appears on the screen.
2. **Description** – a complete description of what the field is for, how you can use it, what the valid entries are, and how a specific entry in this field can affect the status of another field.

Getting Started

The Elegant and Legend PPS and interface package, combined with an IBM[®] personal computer (or compatible), provides the flexibility to program Elegant and Legend pagers to meet individual requirements. This software has a modern look and ease-of-use operation. To obtain the best results from the product, please take a few minutes to read this instruction guide.

Equipment Required

- **IBM Personal Computer or compatible** (not included)

The Elegant and Legend programming is designed to operate on the IBM personal computer or compatible with Windows 2000, XP or 2003, a serial port, and 256M or 512M of available RAM. This software is best viewed at 1024x768 screen resolution.

- **Pager Interface** (not included)

This unit provides communication between the computer and the Pager Mechanical Interface. This package includes all cables necessary for connection with the computer, the power source and the Pager Mechanical Interface.



Use only the latest model of the Programming Interface, with the Product Family Elegant and Legend pager and pager programming software. Use only the Unication-supplied cable for connection between the Pager Mechanical Interface and the Programming Interface. Use of non-approved cables can result in improper operation and/or incorrect programming of the pager.

- **Pager Mechanical Interface** (included)

This fixture is designed specifically for the Product Family Elegant and Legend pager.

It allows the pager to be connected to the computer via a serial interface. If the computer has only USB ports, a standard off-the-shelf Serial to USB converter will work.

- **Pager Programming Software** (included)

This software program, designed specifically for the Product Family Elegant and Legend pager, allows you to select the desired information to program into the pager. A CD is provided to facilitate the programming procedure.

Equipment Setup

Refer to Figure 1 while performing the following steps.

1. Plug the serial cable into the Pager Mechanical Interface. Connect the other end of the serial cable to the serial port on your computer



The program uses COM1 as the default communications port. If both a serial port and a modem are used on the computer, it is recommended that COM1 be used as the serial port. If COM1 cannot be used, change the default to COM2 in the File/Setup menu item when using the software.



Use only the Unication-supplied cable for connecting the Pager Mechanical Interface. Use of non-approved cables can result in improper operation and/or incorrect programming of the pager.

2. Plug the power supply cable into the Pager Mechanical Interface and plug the ac/dc adapter into a 120 Vac (or 220 Vac) electrical outlet.

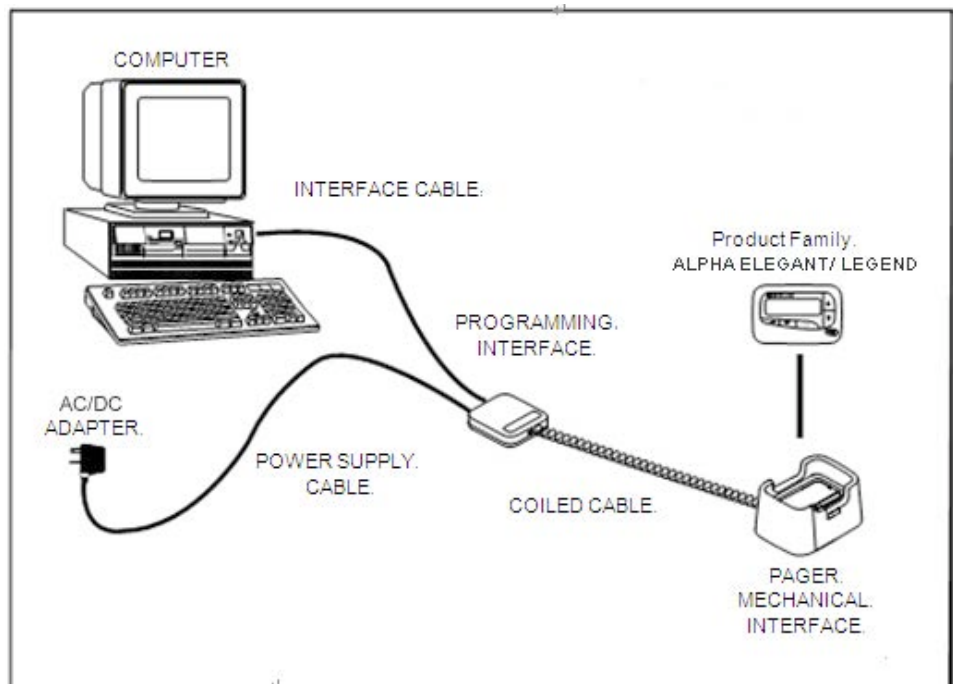


Figure 1. Elegant and Legend Equipment Connection Diagram

Preparing a Elegant and Legend for Reading or Programming

1. Align the contact pins of the programming station with the two (2) holes on the rear of the pager located to the right of the battery door latch.
2. Place the pager in the programming station.
3. Ensure the pager is tight in the programming station. The pager is now ready to read or program.

Installing The Software

The Product Family Elegant and Legend programming software includes the "SETUP_Elegant and Legend PPS.exe". This file automates installing the software onto the hard (drive) of your computer

Only one configuration for the programming software is allowed; therefore, if you want to keep an old/new version of the programming software, you must remove the current version which is on your system.

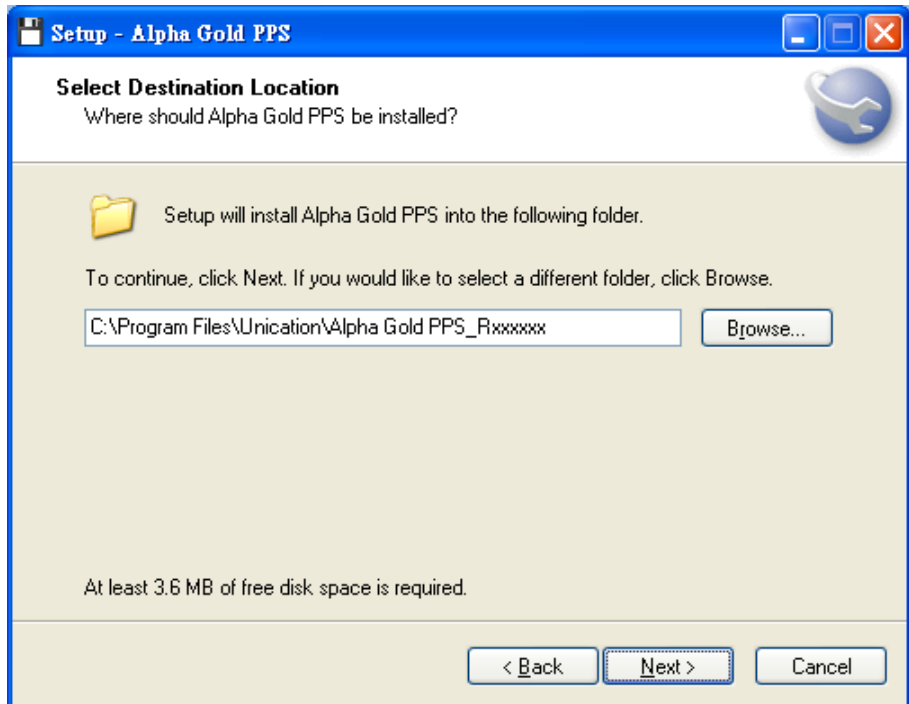
Double click the "SETUP_Elegant and Legend PPS.exe" icon, the screen will be shown as below.

Click "Cancel" at any time to end the Setup program.

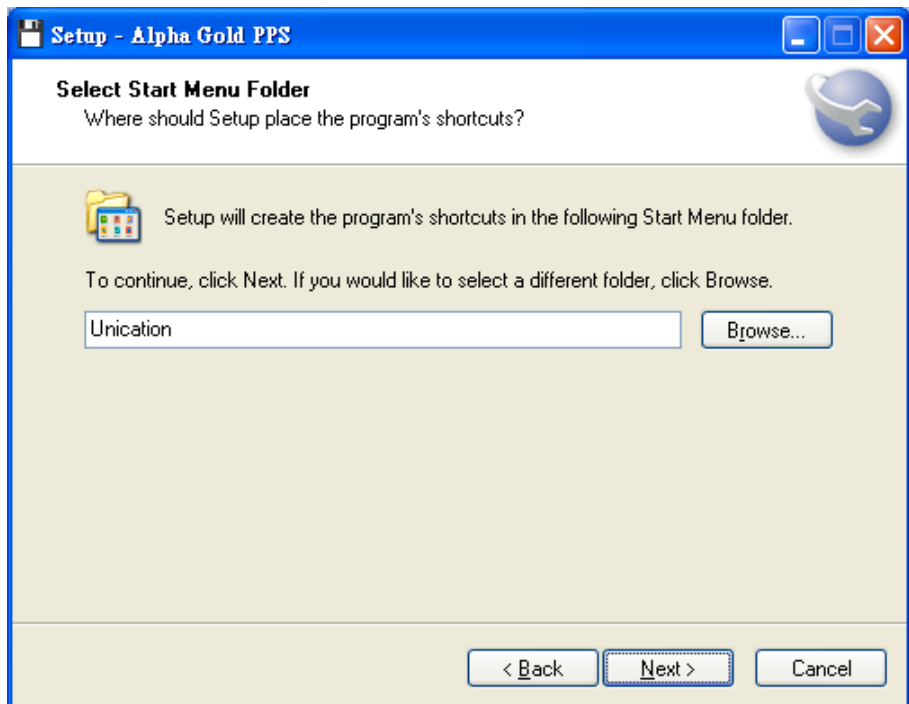
Installation Parameters



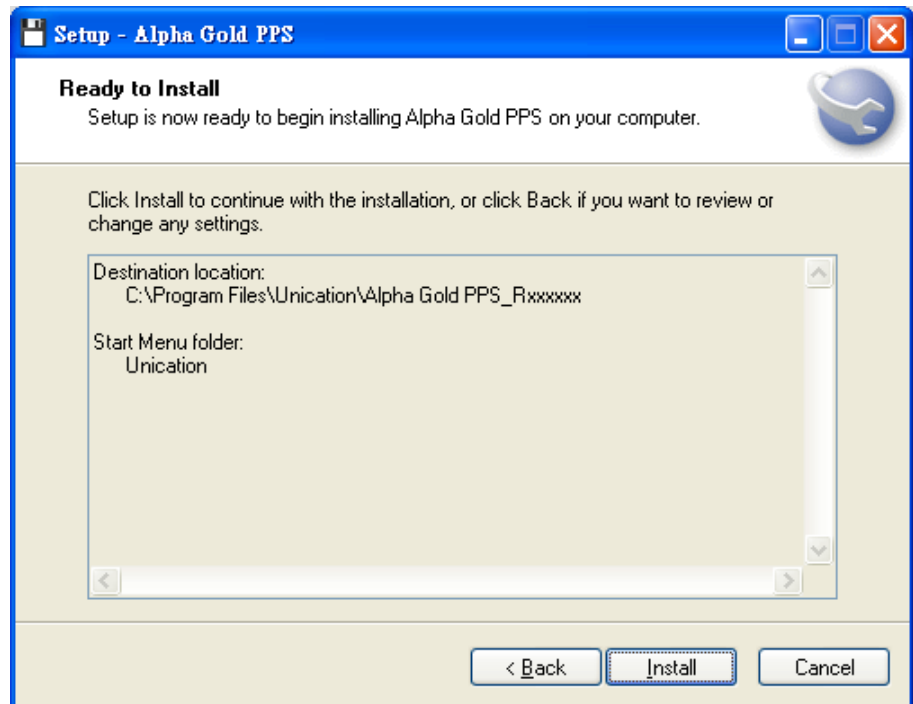
Click "Next" to enter the next screen.



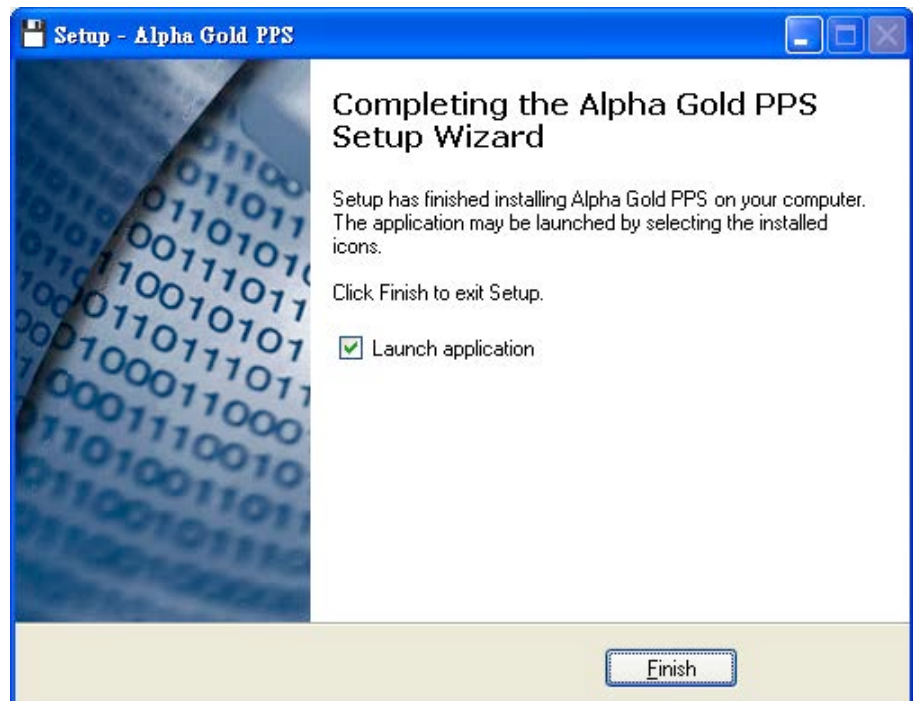
Click "Browse" to change the location where you want to install the software or click "Next" to enter the next screen.



Click "Browse" to change the location where you want to install the software or click "Next" to enter the next screen.



Click "Install" to continue with the installation, or click "Back" if you want to review or change any settings.



Click "Finish" to exit the installation program.

Basic Layout

The Elegant and Legend PPS uses a graphic interface that supports both a mouse and a keyboard. Anything that can be done with the mouse can be done with a key sequence. Refer to Figure 2.

1. **Title Bar** - Located above the menu bar, a non-selectable region that contains the title name of the program.
2. **Menu Bar** - Each menu name that is visible on the menu bar contains menu items that are closely related to it. When a menu is selected, such as File, the menu displays specifications that can be chosen.
3. **Toolbar** - The Standard toolbar contains the basic file and program operations.
4. **Desk top** - The main portion of the screen, where most of the interaction occurs during programming. All dialog and message boxes activated from the menu bar and status line is displayed on the desktop.
5. **Status Line** - Located at the bottom of the window, describes the current status of the desktop. Clicking the mouse or pressing the associated function key activates the status line. The line calls out the most important function being performed or frequently used.

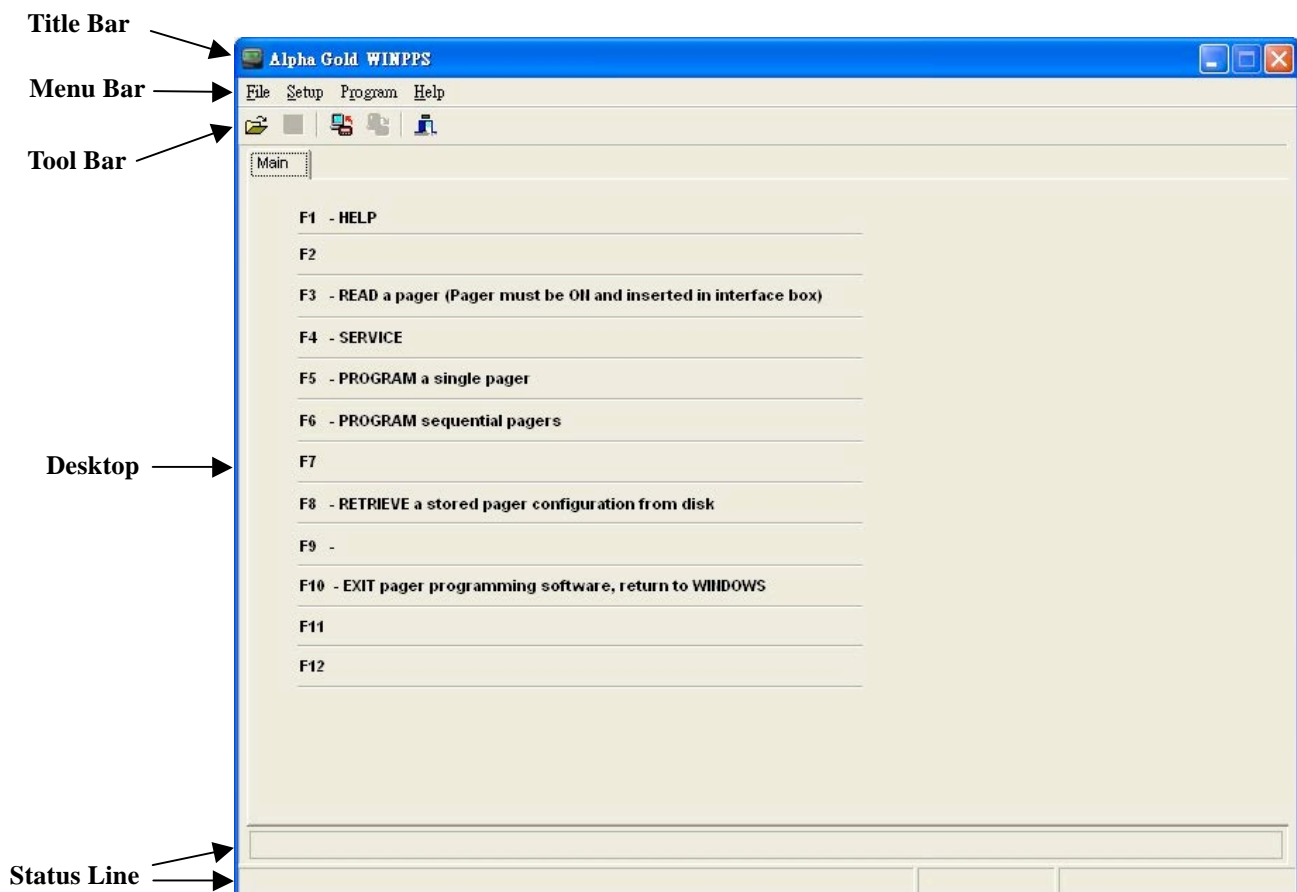


Figure 2. Elegant and Legend PPS Blank Desktop Screen

The F1 Help key is always displayed. All active function keys can be viewed at any time by selecting F1 Help.

Using Your PPS

Overview for Programming a Pager

To read and program your pager, follow these steps:

1. Use the Main Menu to select the Read/Write Pager options.
2. Enter information in the options screens.
3. Choose the program option from the Program Menu.

These steps are shown graphically in Figure 3:

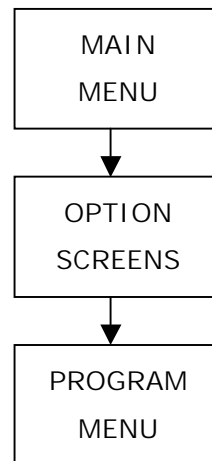


Figure 3. Basic Steps in Programming a Pager

Getting Help

The **F1** key is used for help. On-screen help is available whenever you see **F1 Help** in the lower left-hand corner of the screen. All menus in this program use **F1** for help.

Main Menu

Please see the main menu screen as shown in Figure 4. The Main menu provides selections for reading and programming a pager and setting up your computer configuration. Each task is explained in detail as you continue through this manual.

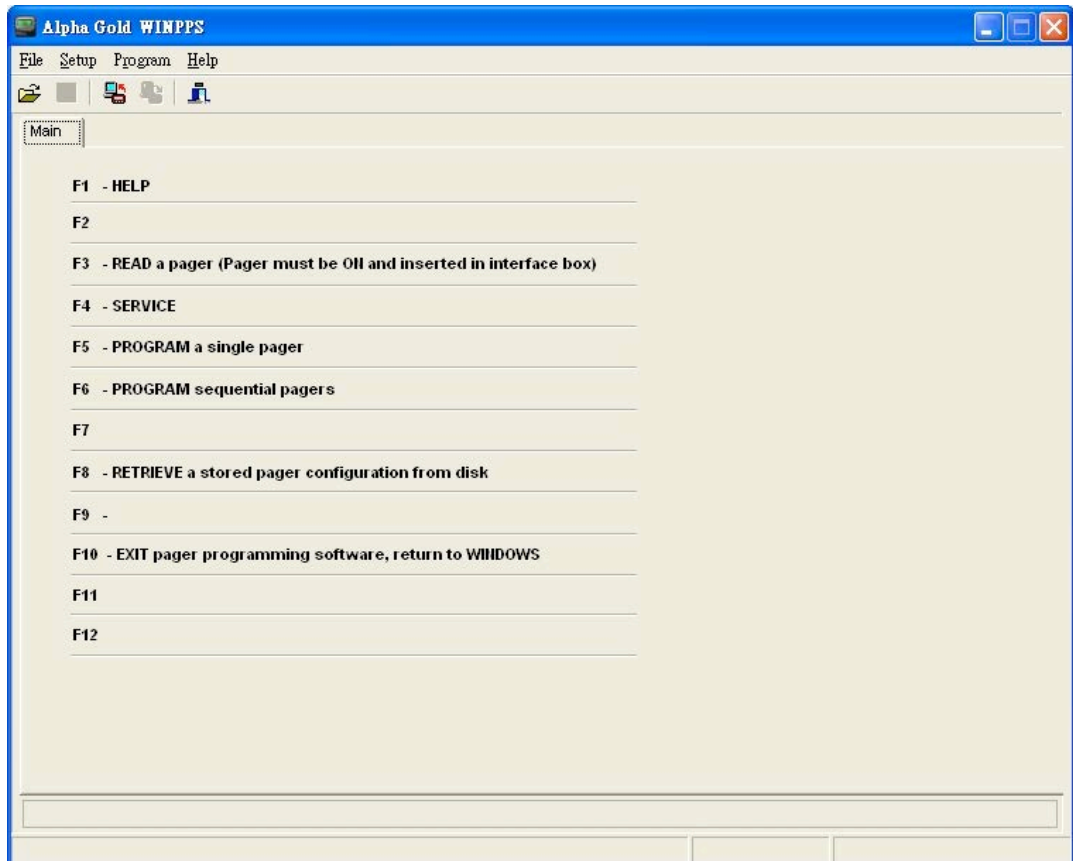


Figure 4. Main Menu Screen

The **Main Menu** has four sections: **F**ile, **S**etup, **P**rogram and **H**elp.


Ex. To select the File menu, click your mouse on the menu bar item **F**ile or press **Alt** **F** simultaneously.



The **F**ile pull-down menu has three items: Any of the menu items can be selected in one of two ways:

- Click on the text.
- Press the function key associated with the command/option, such as **F8** for **Load Codeplug**.

When a window is active, use the **mouse** or press **Enter** to position the cursor. Either click with the **mouse** or press **Enter**.

Press  to return to the Main menu.

➤ Not all of the options are available on all pagers.


File Menu

Load Codeplug

Selecting this screen loads an existing codeplug from disk storage. Choose the codeplug from the list or enter the name on the input line. Click Open to load or Cancel to exit.

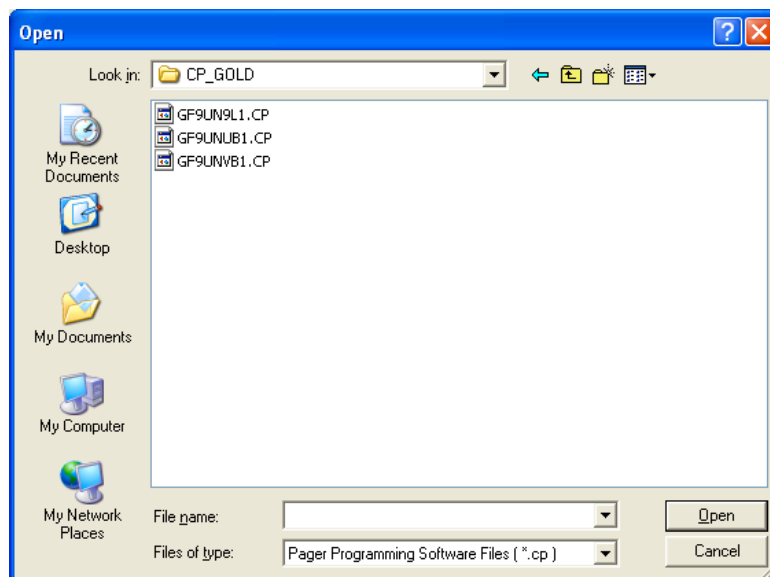


- **Shortcuts**

Toolbar: 

Keys: F8

- The following options allow you to specify which file to open:




Save Codeplug

Selecting this screen creates a file on disk with an extension of .CP as a default or any extension you choose. This file contains all current codeplug settings.

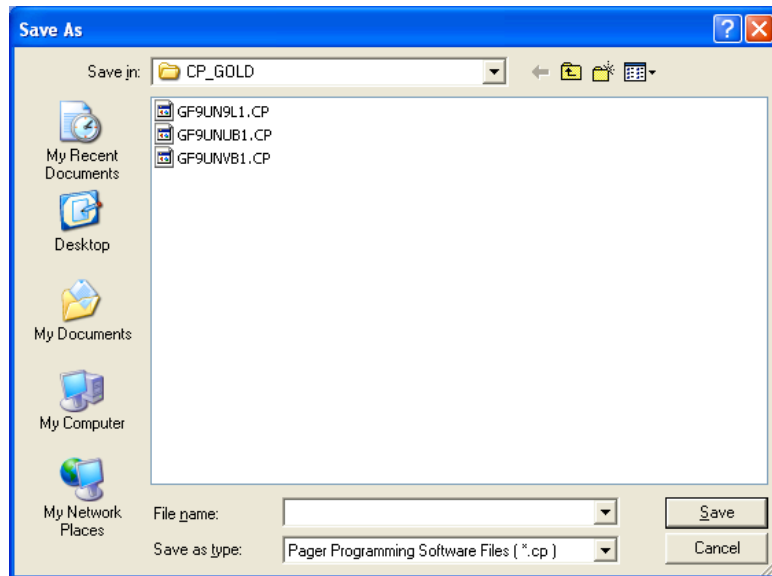


- **Shortcuts**

Toolbar: 

Keys: Ctrl+S

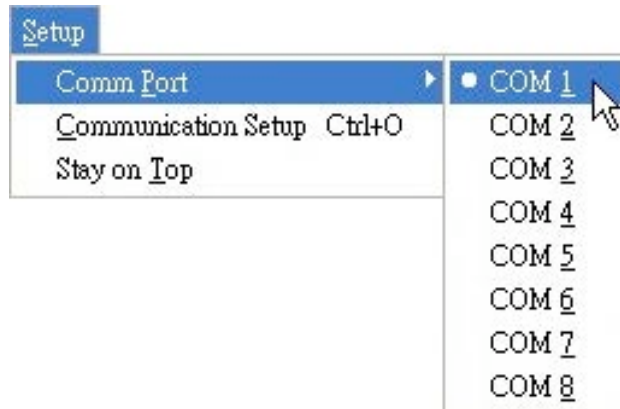
- The following options allow you to specify the name and location of the file you're about to save:



Setup Menu

Port Selection

Use the Setup | Comm Port menu to select serial for capture.



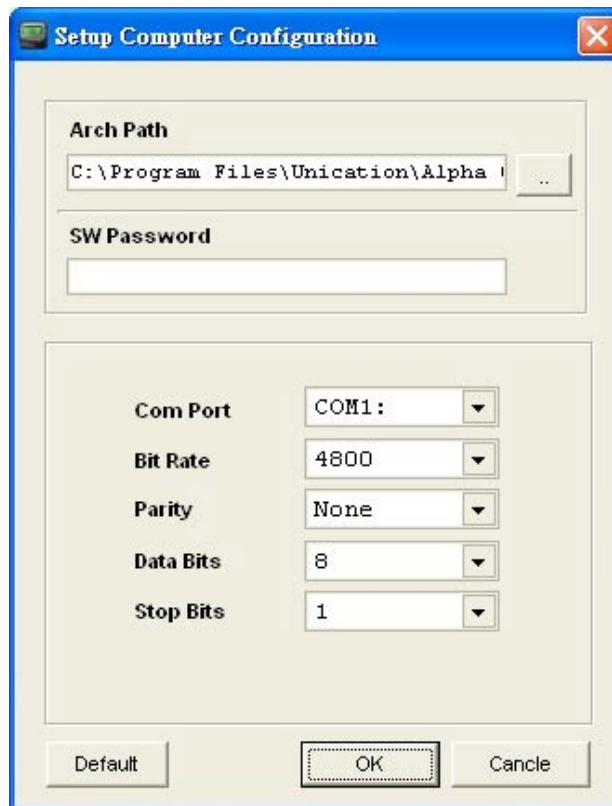
Setup Options

This screen allows you to set up your own computer configuration. You can select the disk drive and path name in which your configuration files are archived and the communication port used to communicate to the Programming Interface. Similar to the ability to select password protection in the initial setup program, you can either change or delete that password in the Setup screen shown below.



- **Shortcuts**

Keys: Ctrl+O



After you have set up the desired configuration, save the configuration by pressing save. Otherwise, the setup is only valid during this session.

The parameters for a communication port to the pager have been selected: 4800 baud, no parity, 8 data bits, and 1 stop bit in Product Family Elegant and Legend pagers. Make sure they are set correctly.

The program uses COM1 as the default communication port. If both a serial port and a modem are used on the computer, it is recommended that COM1 be used as the serial port. If COM1 cannot be used, change the default to COM2 in the computer configuration screen.

Stay On Top

To keep PPS as the top-most window on the desktop.

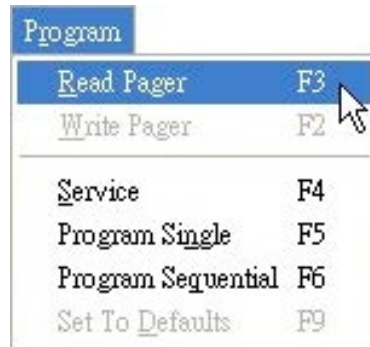


Field Name	Description
Arch Path	This is the path used to save the archived information.
SW Password	A software password can be entered to prevent unauthorized use of this program. If no password is required, leave this field blank.
Com Port	Select the communication port used to communicate with the paging terminal. Valid entries are COM1: to COM8: , depending upon the communication ports the computer is equipped with. Ensure the communication port selected is not used by another software application; some RAM-resident desktop organizers reserve a communication port for their own use.
Bit Rate	This is the rate or speed the communication port sends data bits. Pressing the space bar toggles through the valid choices: 1200,2400,4800,9600,19200
Parity	The method is used to check for parity or error. Pressing the space bar toggles through the valid choices of None, Even and Odd .
Data Bits	Select either 7 or 8 ; this is the number of data bits per byte. Pressing the space bar toggles between the valid choices.
Stop Bits	Select either 1 or 2 ; this is the number of stop bits to use. Pressing the space bar toggles between the valid choices.


Program Menu

Read Pager

Read the pager.



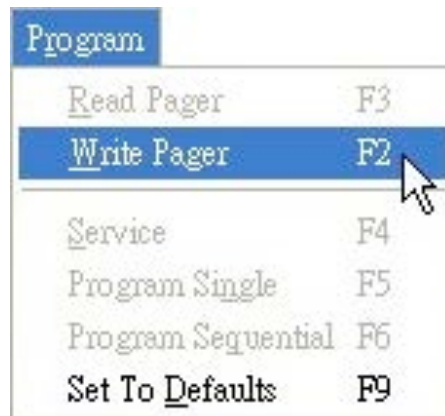
- **Shortcuts**

Toolbar: 


Keys: F3

Write Pager

Program the pager.



- **Shortcuts**

Toolbar: 

Keys: F2

Service

Set the pager in Test Mode or Operation Mode.

Program	
<u>R</u> ead Pager	F3
<u>W</u> rite Pager	F2
<u>S</u> ervice	F4
<u>P</u> rogram <u>S</u> ingle	F5
<u>P</u> rogram <u>S</u> equential	F6
<u>S</u> et To <u>D</u> efaults	F9

- **Shortcuts**

Keys: F4

Program Single

Program a single pager.

The PPS establishes communication with the pager and reads the configuration if there is no data in the PPS. Otherwise it will go to code page instead.

Program	
<u>R</u> ead Pager	F3
<u>W</u> rite Pager	F2
<u>S</u> ervice	F4
<u>P</u> rogram <u>S</u> ingle	F5
<u>P</u> rogram <u>S</u> equential	F6
<u>S</u> et To <u>D</u> efaults	F9

- **Shortcuts**

Keys: F5

Program Sequential

Program sequential pagers.

Program	
<u>R</u> ead Pager	F3
<u>W</u> rite Pager	F2
<hr/>	
<u>S</u> ervice	F4
Program <u>S</u> ingle	F5
Program <u>S</u> equential	F6
Set To <u>D</u> efaults	F9

- **Shortcuts**

Keys: F6

Set To Defaults

Reset all of the options to default and return to the Code Options screen.

Program	
<u>R</u> ead Pager	F3
<u>W</u> rite Pager	F2
<hr/>	
<u>S</u> ervice	F4
Program <u>S</u> ingle	F5
Program <u>S</u> equential	F6
Set To <u>D</u> efaults	F9

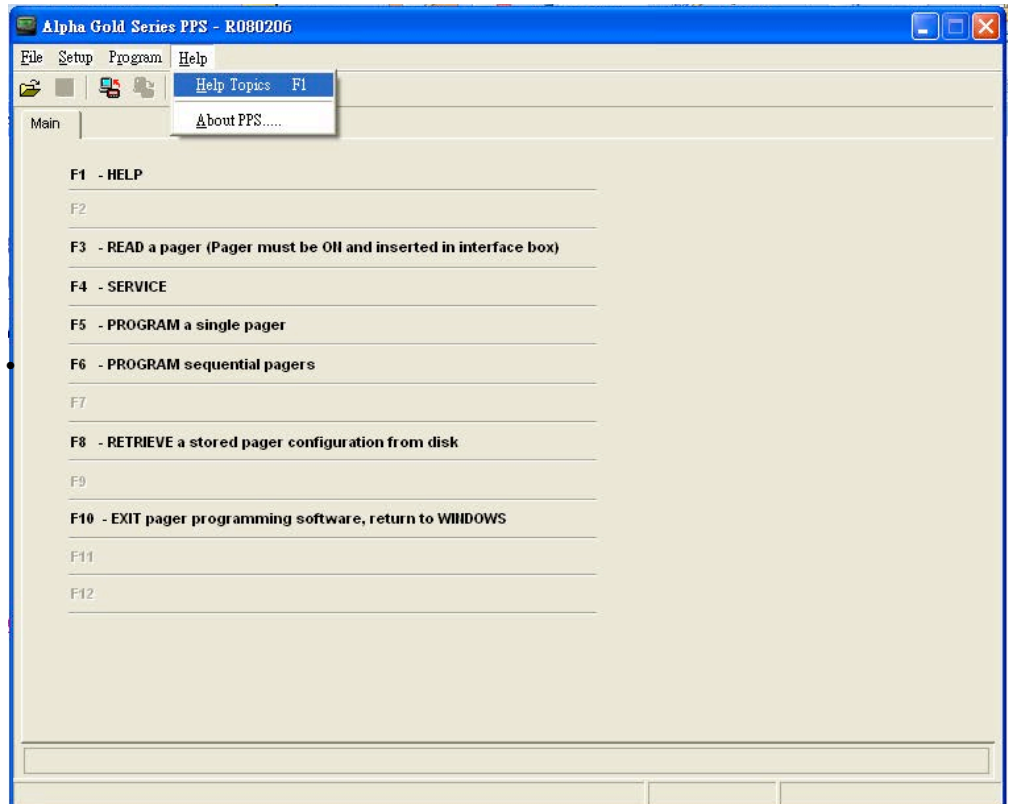
- **Shortcuts**

Keys: F9

Help Menu

Help

Choose Using Help from an application's Help menu. Or, you can press F1 while using a Help window.



Shortcuts

Keys: F1

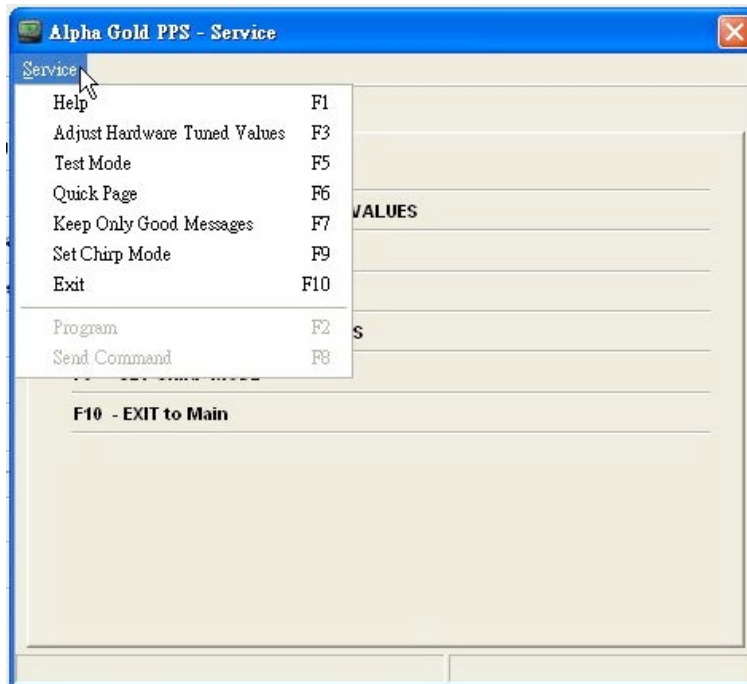
About

Displays version and copyright information about the application.



Service Menu

The Service menu allows you to make selections for placing the pager in test modes or operations modes.



Adjust Hardware Tuned Values:

Certain values are tuned for each pager and they are dependent upon the specific hardware being programmed. This screen allows you to adjust these values when the pager decoder board needs repair or replacement.

Service	
Help	F1
Adjust Hardware Tuned Values	F3
Test Mode	F5
Quick Page	F6
Keep Only Good Messages	F7
Set Chirp Mode	F9
Exit	F10
<hr/>	
Program	F2
Send Command	F8

- **Shortcuts**

Keys: F3

Test Mode:

Service Test Options screen..

Service	
Help	F1
Adjust Hardware Tuned Values	F3
Test Mode	F5
Quick Page	F6
Keep Only Good Messages	F7
Set Chirp Mode	F9
Exit	F10
<hr/>	
Program	F2
Send Command	F8

- **Shortcuts**

Keys: F5

Quick Page:

This test allows you to check the pager RF sensitivity.

Service	
Help	F1
Adjust Hardware Tuned Values	F3
Test Mode	F5
Quick Page	F6
Keep Only Good Messages	F7
Set Chirp Mode	F9
Exit	F10
<hr/>	
Program	F2
Send Command	F8

- **Shortcuts**

Keys: F6

Keep Only Good Messages:

Discard all error, incoming messages.

Service	
Help	F1
Adjust Hardware Tuned Values	F3
Test Mode	F5
Quick Page	F6
Keep Only Good Messages	F7
Set Chirp Mode	F9
Exit	F10
<hr/>	
Program	F2
Send Command	F8

- **Shortcuts**

Keys: F7

Set Chirp Mode:

Set the pager to the chirp alert mode.

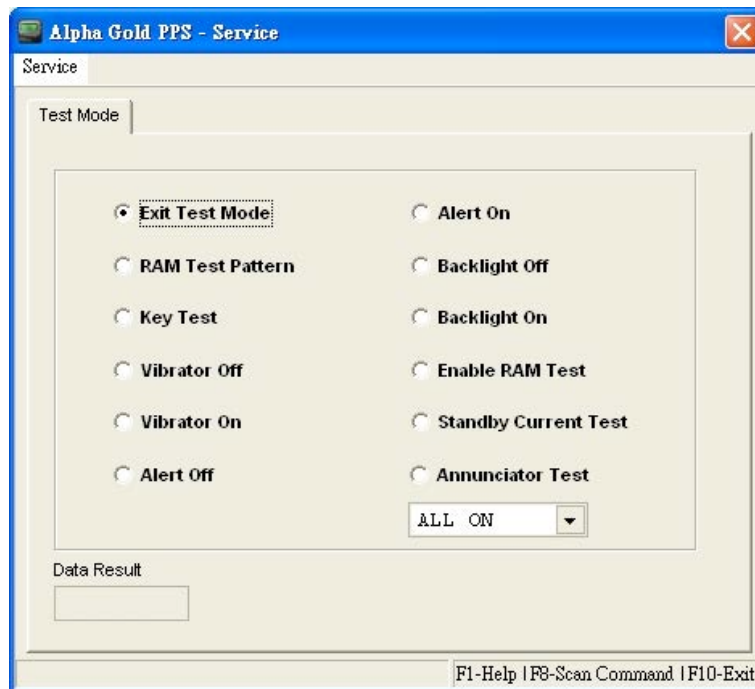
Service	
Help	F1
Adjust Hardware Tuned Values	F3
Test Mode	F5
Quick Page	F6
Keep Only Good Messages	F7
Set Chirp Mode	F9
Exit	F10
<hr/>	
Program	F2
Send Command	F8

- **Shortcuts**

Keys: F9

Service Test Options

The pager supports two types of test modes: quick test mode and extended test mode. The Service: TestMode screen allows you to test the pager's various functions. For more information about testing, refer to the Self-Diagnostic Feature section in the **Product Family Elegant and Legend Service Manual**.



You have selected a field to perform the individual test.

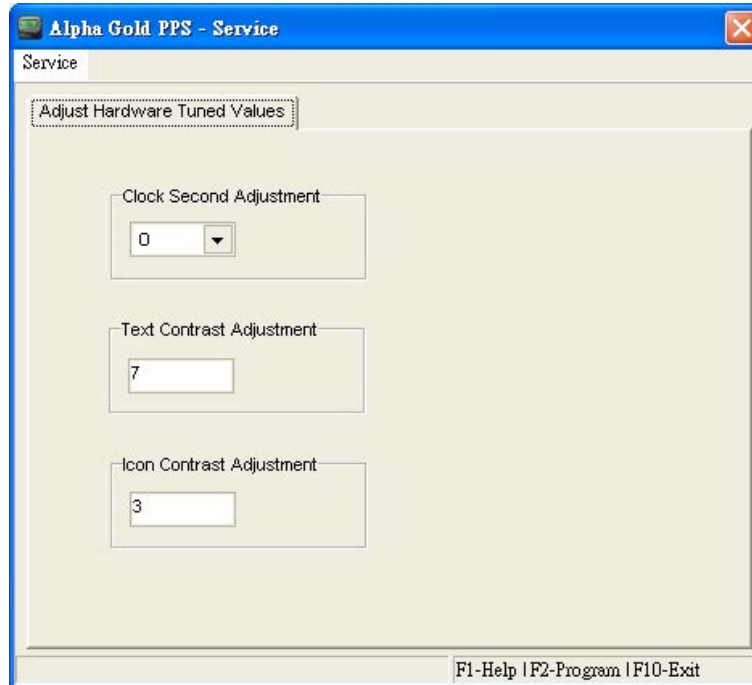


- **Shortcuts**

Keys: F8

Adjust Hardware Tuned Values

This screen allows you to adjust certain values for the specific hardware for each pager.



Program the pager.



- **Shortcuts**

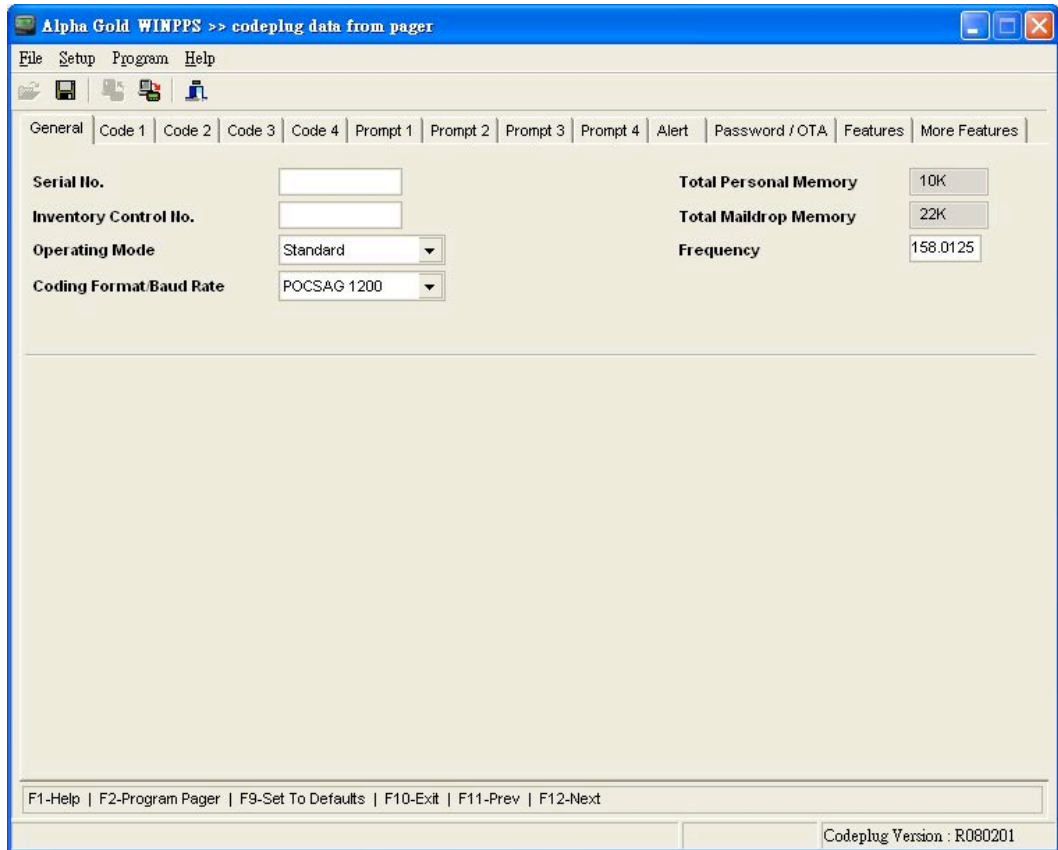
Keys: F2

Field Name	Description
Clock Second Adjustment	This feature allows you to set the crystal of the pager. You can adjust the crystal to a + or - value to satisfy time loss or gain within a 24-hour period. Valid Selections are: 0, +1, +2, +3, +4, +5, +6, +7, +8, -1, -2, -3, -4, -5, -6, -7, and -8.
LCD Contrast Adjustment	This selects the display contrast on pagers. 0-15 are manual contrast settings; 16-255 are auto contrast settings.

UNIFICATION CONFIDENTIAL PROPRIETARY


General Options


This screen provides fields for entering essential pager code and function information, allowing you to select the configuration you want to use to program the pager.




Toolbar:




Press  to program the pager.

Press  to program the pager.

Press  to return to the Main menu.

Keys:

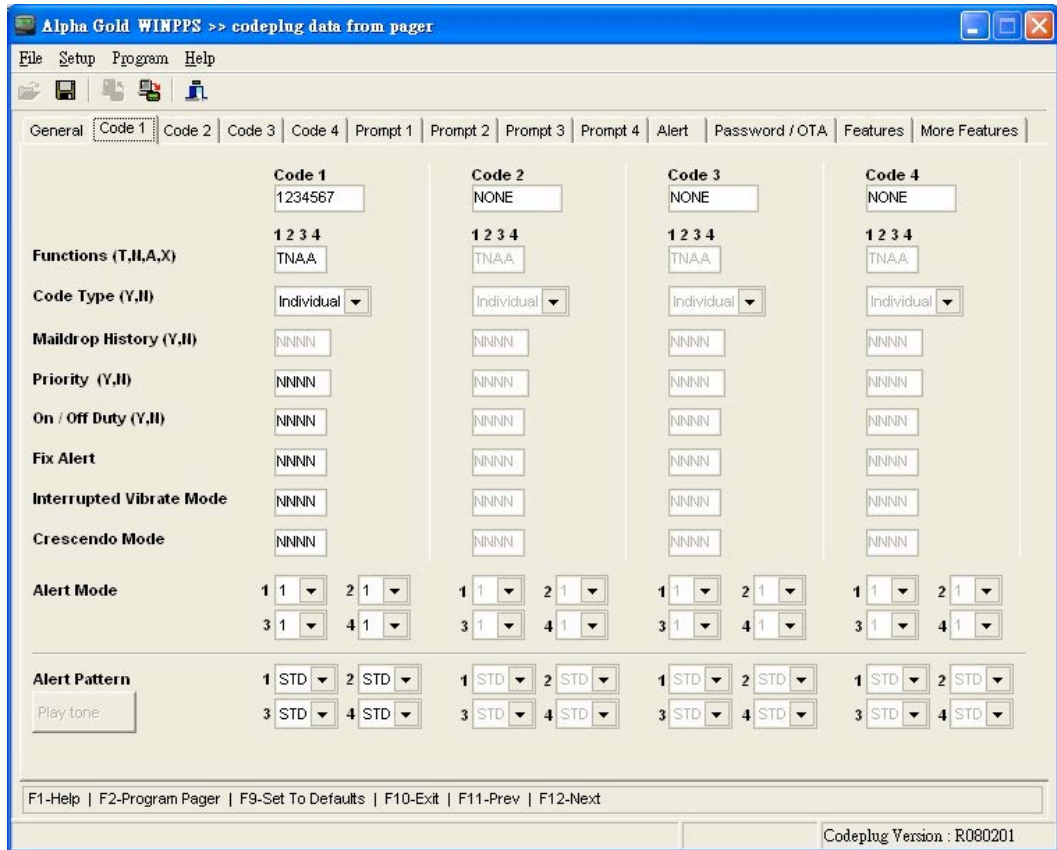
F1-Help | F2-Program Pager | F9-Set To Defaults | F10-Exit | F11-Prev | F12-Next

N  All of the options are available on all pagers.

Field Name	Description
Serial No.	This non-editable field displays the serial number programmed into the pager at the factory and should match the serial number on one of the labels attached to the pager. If this label is not available, refer to the order form for the appropriate serial number.
Inventory Control No.	This field allows you to enter an Inventory Control Number (up to ten characters) that is stored in the pager. Unlike the serial number, this number can be changed as needed.
Operating Mode	This field allows you to silence all alerts, including priority alert when Deaf Pager is selected. Normal selection for this field is Standard .
Coding Format/Baud Rate	This field designates either: POCSAG 512 POCSAG 1200 POCSAG 2400 Press the spacebar to toggle among choices
Frequency	This field designates the frequency on which the pager operates.
New Alert Mode	This field allows for expanded alerting options for the Elegant and Legend pagers only. If set for No, the pager will have a limited choice of alert settings, similar to that of the Alpha Gold pager.
On/Off Duty	This is a new feature available on the Elegant and Legend pagers only. If Enabled, message alerting can be selectively enabled or disabled on a Functional Address basis

Code Options


This screen provides fields for entering essential pager code and function information, allowing you to select the configuration you want to use to program the pager.





- **Shortcuts**

Toolbar:




Press  to program the pager.

Press  to program the pager.

Press  to return to the Main menu.

Keys:

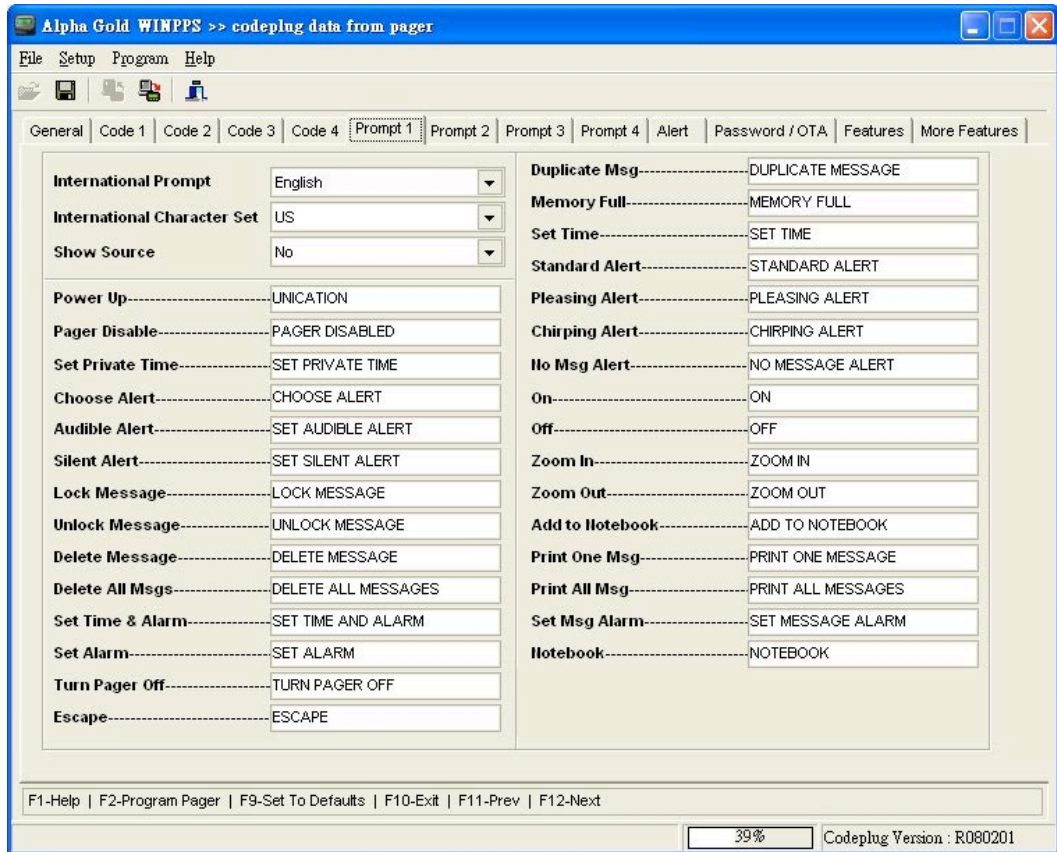
F1-Help | F2-Program Pager | F9-Set To Defaults | F10-Exit | F11-Prev | F12-Next

N  ll of the options are available on all pages.

Field Name	Description
Functions (T,N,A,X)	This field allows you to select the operation of each address: N = Numeric T = Tone A = Alphanumeric X = Inactive
Code Type (Y,N)	This field allows you to select the type of code: Individual Group Call Mail Drop
Maildrop History (Y,N)	This field is only a variable on Maildrop addresses,. The pager can keep up to four history files for each Maildrop source for which the Maildrop History option has been enabled. Valid selections are Y or N .
Priority (Y,N)	This field allows you to select any address to provide a priority alert when a message is received. Valid selections are Y and N .
On/Off Duty (Y,N)	This option provides the On/Off Duty function. Valid selections are Y and N .
Fix Alert	This option will lock Message Alert, preventing users from selecting the Choose Alert Menu. Valid selections are Y and N .
Interrupted Vibrate Mode	This option provides the default Vibrate Mode of Message Alert. Valid selections are Y and N .
Escalating Mode	This option provides the default Escalating Mode of Message Alert. Valid selections are Y and N .
Alert Mode	This option provides the default Alert Mode of Message Alert. 1 = Alert Mode 2 = Alert & VIB 3 = VIB Then Alert 4 = Vibrate 5 = Chirp 6 = Silent
Alert Pattern (Note: By clicking on the Alert Pattern, Play Tone button one can hear the alert tone being selected)	This option provides the default Alert Pattern Mode of Message Alert. STD PL1 PL2 PL3 PL4 PL5 PL6 PL7 UG1 UG2 UG3 UG4 UG5 UG6 UG7 UG8

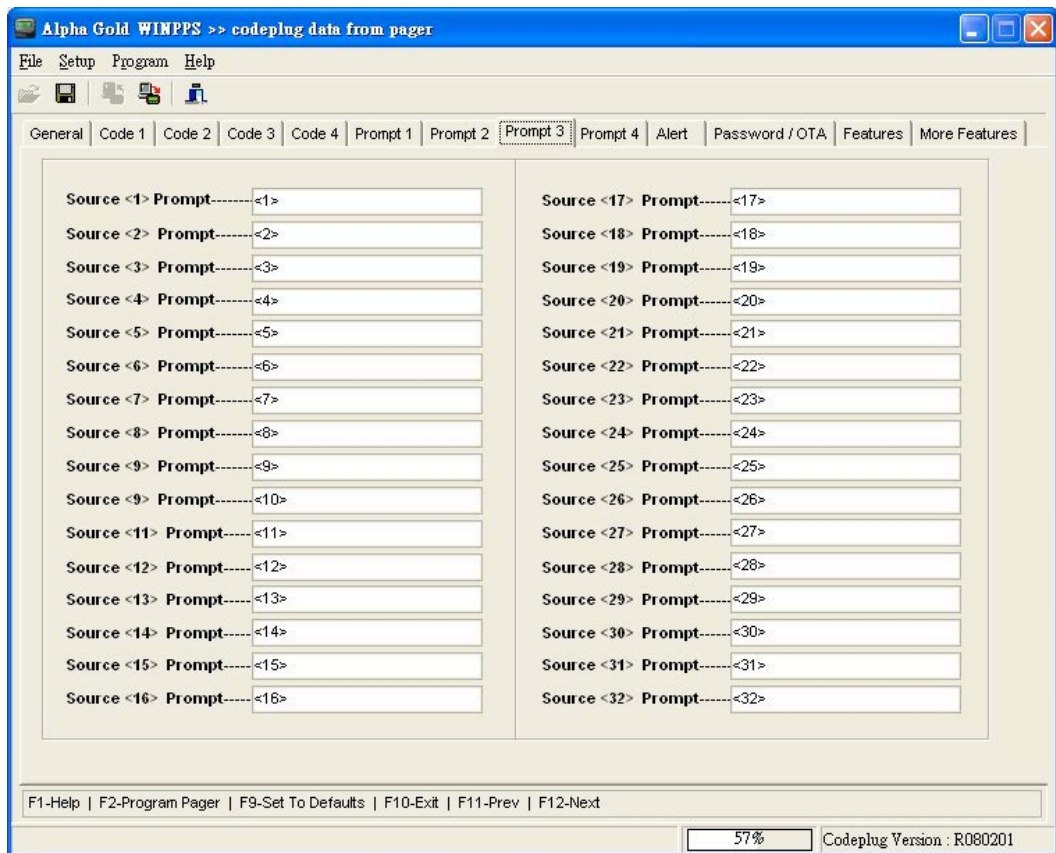
Prompts

This screen shows the first half of the pager prompts available with the Product Family Elegant and Legend.



➤ Each prompt can be customized if desired. The text typed in the associated source is displayed at the end of the message. Only uppercase is accepted.


Field Name	Description
Show Source	Each source, 1-32 (or 64 for the Legend), has a programmable source prompt. Each prompt can be customized in the codeplug, if desired, or the defaults can be used. If selected, the text programmed is displayed at the end of the message.





- **Shortcuts**

Toolbar:



Press  to program the pager.

Press  to program the pager.

Press  to return to the Main menu.

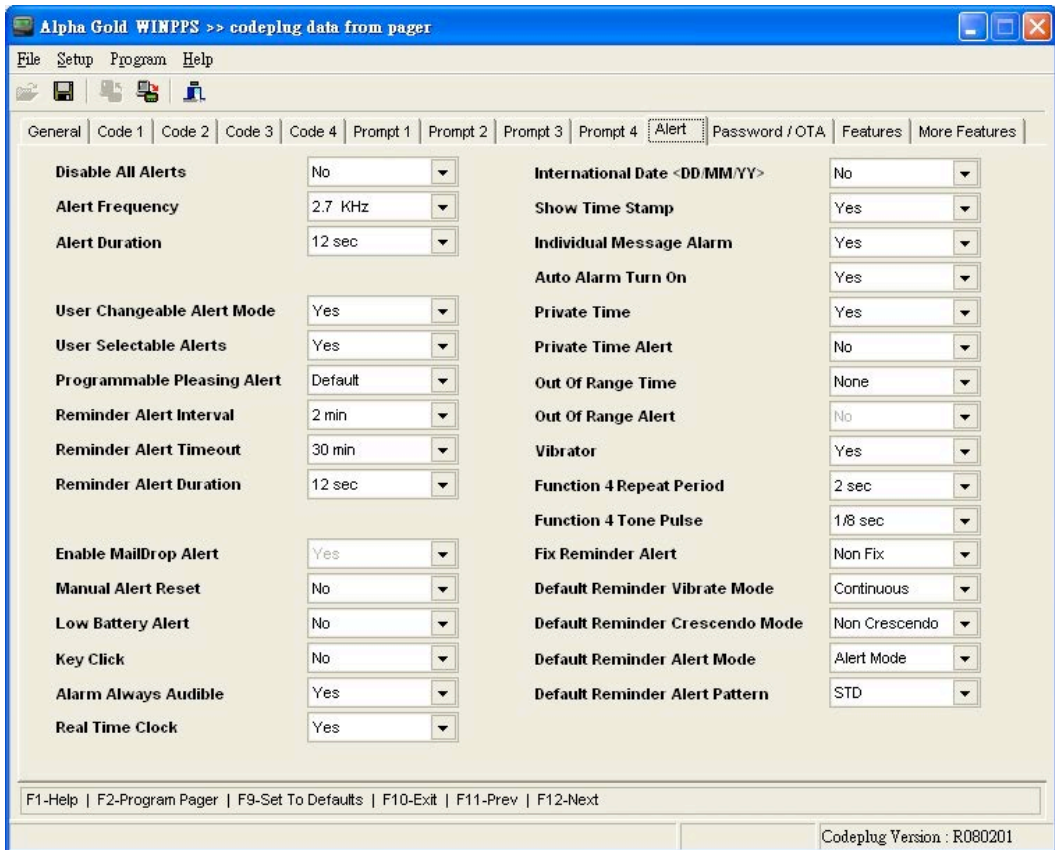
Keys:

F1-Help | F2-Program Pager | F9-Set To Defaults | F10-Exit | F11-Prev | F12-Next

➡ Not all of the options are available on all pagers.

Alert Options


This menu shows the alert options available with the Product Family Elegant and Legend pager and is shown with the default option settings





- **Shortcuts**

Toolbar:



Press  to program the pager.

Press  to program the pager.

Press  to return to the Main menu.

Keys:

F1-Help | F2-Program Pager | F9-Set To Defaults | F10-Exit | F11-Prev | F12-Next



Not all of the options are available on all pagers.

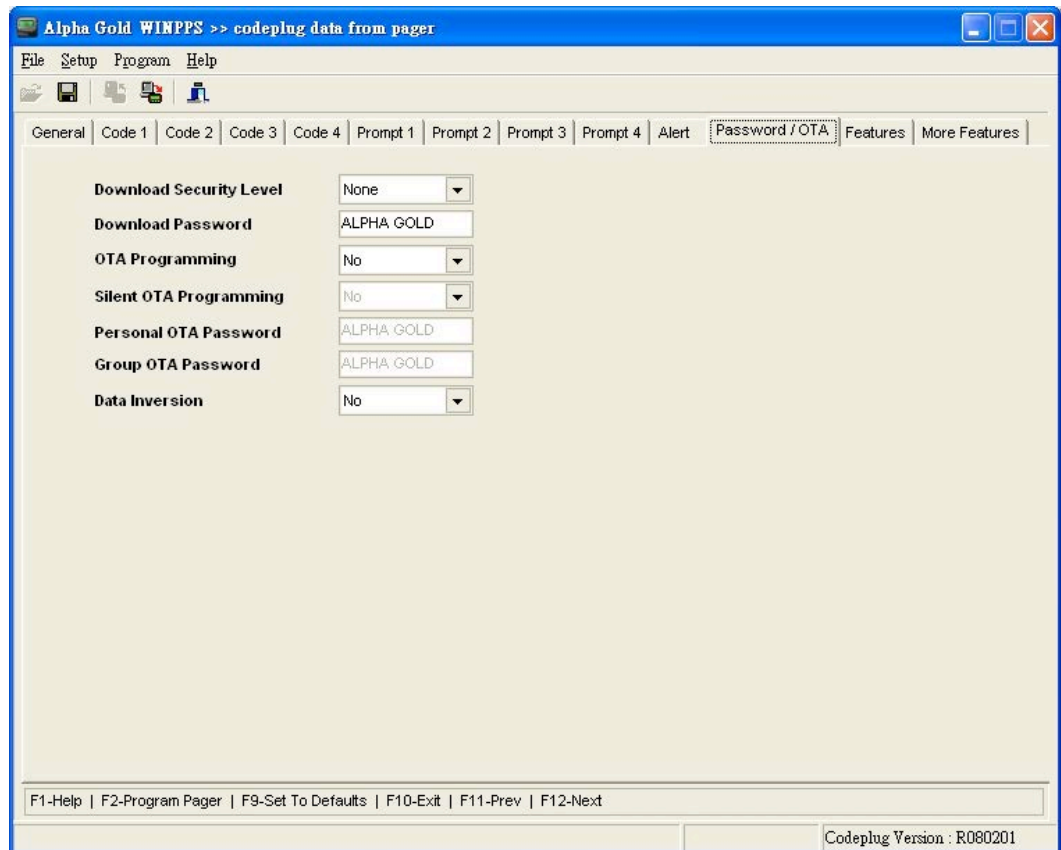
Field Name	Description
Disable All Alerts	When Yes is selected all audible and vibrating alerts are disabled. All alert options and user-changeable alert modes are dependent upon this option.
Alert Frequency	The available selections for standard alerts are : 3.84 kHz 3.2 kHz 3.0 kHz 2.7 kHz 2.5 kHz 1.37 kHz 1.24 kHz
Alert Duration	Pager alerts can be configured for short (2 sec) or long (30 sec) non-priority alerts. If the Manual Alert Reset is set to Yes , the option is set for silent alerts only.
User Changeable Alert Mode	When Yes is selected, the alert mode can be changed by using the pager's function menu. If No is selected, the pager is always in the audible mode, unless the deaf pager option is enabled.
User Selectable Alerts	With this option enabled, you are able to select either standard alerts, one of the seven pleasing alerts, chirp alerts, or no alerts using a special "set alert s screen" menu. This menu is accessed through the pager's function menu.
Reminder Alert Interval	With the alert interval time programmed into the pager, the pager emits a chirp or vibration every reminder alert time interval" until all unread messages are read. Valid selections are : None 2 min 3.07 min 4 min 5.07 min 10 min 15.07 min 30 min
Reminder Alert Timeout	With this option selected, the time period begins with a newly arrived message and is reset every time a new message is received. When the time period expires , the pager does not emit any more reminder alerts until a new message arrives . Valid time period selections are : None 2 min 3.07 min 4 min 5.07 min 10 min 15.07 min 30 min 15.07 min 30 min
Reminder Alert Duration	Pager can be configured for short (2 sec) or long (30 sec) Reminder alerts.
Enable Maildrop Alert	If Yes is selected, all maildrop messages alert with a chirp alert. If None is selected, there is no alert for maildrop messages.
Manual Alert Reset	With this option selected and the pager in the audible mode, an incoming message alert can only be stopped manually by pressing any button on the pager.
Low Battery Alert	If Yes is selected, the pager emits a (one second) low battery cell alert when the battery reaches a low cell state.
Key Click	If Yes is selected, a key click occurs when a pager button is pressed. The click sound is caused by turning on the transducer for a very short time. If silent mode is selected, key click is disabled.

Field Name	Description
Alarm Always Audible	If Yes is selected, the general and individual message alarms are always audible.
Real Time Clock	With this option selected, a real time clock displaying the time and date displays.
International Date (DD/MM/YY)	When Yes is selected, the date is displayed in the international (day-month) format.
Show Time Stamp	The pager displays a message's time stamp when a message is being read. The time stamp is shown at the very end of the message after the source prompt, if show source is enabled.
Individual Message	If Yes is selected, you can attach an alert to a particular message, with a Alarm specified time to initiate the alert.
Auto Alarm Turn On	With this option selected and any type of alarm enabled, the pager automatically turns on and gives an alarm alert rather than a power up alert if it is off when the alarm expires.
Private Time	Allows the pager to use Private Time which is a time period specified by the user when the pager goes into completely silent mode. When activated, the pager continues to receive messages but does not generate any alerts.
Private Time Alert	If Yes is selected, the pager chirps when it is automatically turned on or off. If the pager is in the vibrate mode, it vibrates for 2 seconds. If No is selected, the pager turns off silently and turns on as if it were turned on manually.
Out of Range Time	With an out-of-range time by the codeplug, the pager is considered "out of range" when it does not detect a P O C S A G synchronization word for that time period. The out-of-range icon displays at this time. Valid selections are: None 32 sec 64 sec 2 min 3.07 min 4 min 5.07 min 6 min 10 min 15.07 min
Out of Range Alert	With this option, the pager alerts when it becomes out of range
Vibrator	If Yes is chosen, you can enable the vibrator in the pager. If you change the alert mode to silent and No is selected, the pager does not vibrate.
Function 4 Repeat	This field allows you to select a 2 second Function 4 repeat time or a 1 second Period Function 4 repeat time for true POCSAG with the 1/16th second pulse duration.
Function 4 Tone Pulse	This field allows you to select a 1/8th second tone pulse or a 1/16th second pulse.
Fix Reminder Alert	This option will lock the Reminder Alert, and then users cannot choose Reminder Alert from Choose Alert Menu. Valid selections are: Non Fix Fix

Field Name	Description
Default Reminder Vibrate Mode	This option provides the default Vibrate Mode of Message Alert. Valid selections are: Continuous Interrupted
Default Reminder Escalating Mode	This option provides the default Escalating Mode of Reminder Alerts. Valid selections are: General Escalating
Default Reminder Alert Mode	This option provides the default Alert Mode of Reminder Alerts. Valid selections are: Alert Mode Alert & VIB VIB > Alert Vibrate Chirp Silent
Default Reminder Alert Pattern	This option provides the default Alert Pattern Mode of Reminder Alerts. Valid selections are: STD PL1 PL2 PL3 PL4 PL5 PL6 PL7 UG1 UG2 UG3 UG4 UG5 UG6 UG7 UG8

Password/OTA Programming Options


This screen shows some of the less common options available with the Product Family Elegant and Legend pager. This screen is shown with the default settings.





- **Shortcuts**

Toolbar:



Press  to program the pager.

Press  to program the pager.

Press  to return to the Main menu.

Keys:

F1-Help | F2-Program Pager | F9-Set To Defaults | F10-Exit | F11-Prev | F12-Next

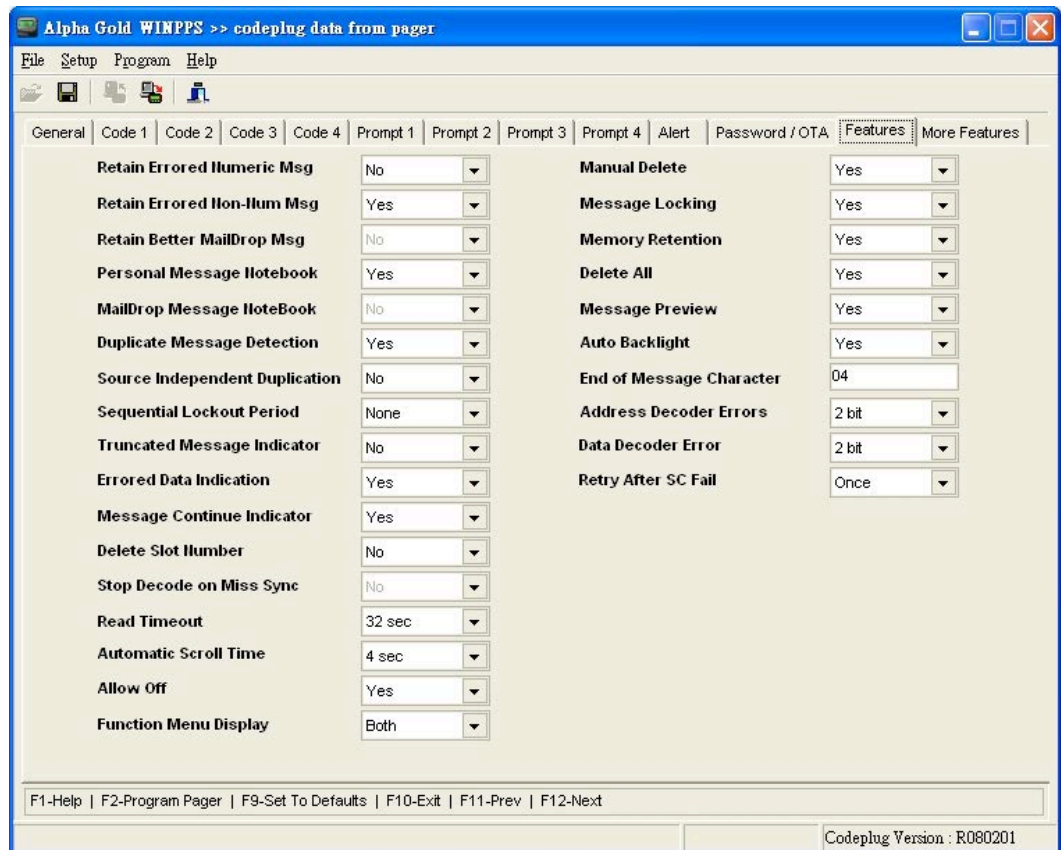


Not all of the options are available on all pagers.

Field Name	Description
Download Security Level	The security levels are either no password requirement for any type of download communication (None) or a password required for everything except test mode (Maximum).
Download Password	Depending upon the level of security selected, the download password may or may not be required for download. Up to ten characters (A-Z, 0-9, space) can be used.
OTA Programming	With this option selected, a pager or pagers can be remotely reconfigured. It can be used to change options, enable a temporarily disabled pager or disabling a pager and changing codeplug data. The OTA page cannot enable a dead (more than eight attempts with an incorrect password) pager.
Silent OTA Programming	With this option selected, the pager powers-up silently after it has been programmed over the air.
Personal OTA Password	A personal OTA password is required to perform an OTA page to personal source. Ten characters (A-Z, 0-9, space) are used.
Group OTA Password	A group OTA password is required to perform an OTA page on a group or maildrop source. Ten characters (A-Z, 0-9, space) are used.
Data Inversion	Certain frequencies require data to be inverted, refer to applicable service manuals for frequencies and their corresponding Data Inversion settings.

Features Options


This screen shows the custom codeplug-selectable features available with the Product Family Elegant and Legend pager.





- **Shortcuts**

Toolbar:



Press  to program the pager.

Press  to program the pager.

Press  to return to the Main menu.

Keys:

F1-Help | F2-Program Pager | F9-Set To Defaults | F10-Exit | F11-Prev | F12-Next

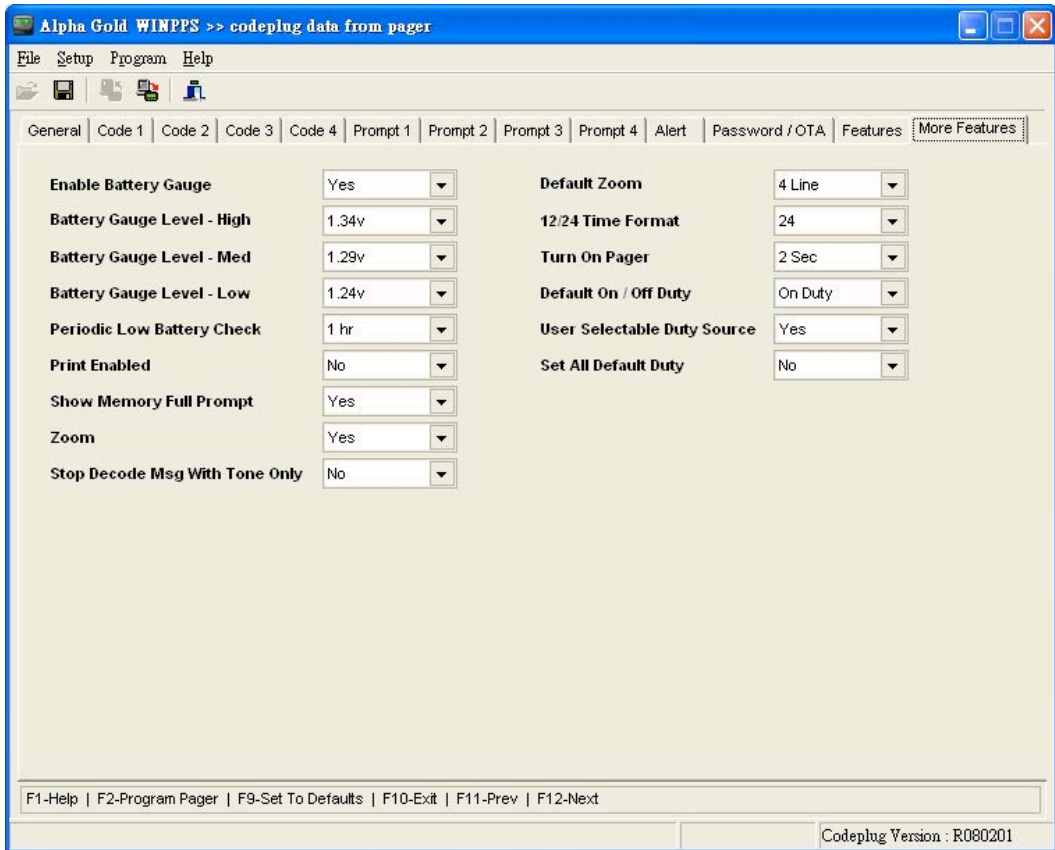
▶ Not all of the options are available on all pagers.

Field Name	Description
Retain Errored Numeric Msg	If Yes is selected, the pager retains numeric messages that contain errors. If No is selected, the pager discards error messages.
Retain Better Maildrop Msg	If Yes is selected, the pager retains non-numeric (alphanumeric and ideographic) messages that contain errors. If No is selected, the pager discards error messages.
Retain Better Maildrop Msg	If Yes is selected, the pager allows a new maildrop message to replace an existing message. This occurs only when the new message contains no errors, or has the same amount of more good characters than the one being replaced.
Personal Message Notebook	This option is available if the pager has been configured to receive personal messages. If the option is available and Yes has been selected, you can add personal messages to the personal notebook.
Maildrop Message Notebook	This option is available if the pager has been configured to receive maildrop messages. If Yes is selected, you can add maildrop messages to the maildrop notebook.
Duplicate Message Detection	If Yes is selected, duplication detection is performed on all personal messages with the same message type as the new message, on a character by character basis. Error characters are ignored during the check. If all non-error characters in both messages match, the existing matching message is flagged as a duplicate. The message with the least number of errors is stored and the other messages are discarded. Duplication is not performed on maildrop messages.
Source Indep't Duplication	When Yes is selected, duplication is performed on all messages with the same function type as the new message. If No is selected, duplication is performed only on messages with the same source and function type.
Sequential Lockout Period	When Yes is selected, a sequential lockout timer begins when a message arrives and is flagged as being sequentially locked out. If duplicate messages arrive, one of the messages is disregarded and not flagged as a duplicate.
Truncated Message Indicator	When Yes is selected, an error truncated message or a normal truncated message is displayed. A "truncated message" indicator displays over the last character in the message.
Errored Data Indication	When Yes is selected, the error character alternately displays with the "best guess" of the error data. If No is selected, the "best guess" of the error data is displayed without any indication that it contains errors.
Message Continue Indicator	If this option is selected, the last character on a screen alternately flashes every 0.5 seconds with a "down" arrow if the message contains more data. If the last character on the screen is error and Error Data Indication = Yes , the Error Data Indicator does not appear on that character. The Message Continued Indicator overrides the Error Data Indicator.
Delete Slot Number	If Yes is selected, the pager displays the message slot number of personal messages.
Stop Decode on Miss Sync	If Yes is selected, pager address falsing on noise is reduced by disabling the detection of any new page from the time an invalid sync word is detected until the next valid sync has been detected.

Field Name	Description
Read Time Out	The current pager display changes after the selected time frame has expired. Valid selections are: 16 sec 32 sec 64 sec 5.07 min
Automatic Scroll Time	While reading a message in the Fast Scroll mode, the display advances forward one screen every "fast scroll time" period. Valid values are: 1/2 sec, 1 sec, 2 sec, 3 sec, 4 sec, 6 sec, 8 sec, 10 sec, and 30 sec.
Allow Off	This option allows the pager to be turned off. If this option is not selected, the pager cannot be turned off without removing the battery.
Function Menu Display	The pager allows you to perform various functions on the pager and on messages. Some of these functions have a corresponding pager option that dictates whether the function is available to you via the pager's function menu. If none of the options are enabled, the MODE button on the pager is disabled and the Function Menu is not displayed. The function menu consists of a series of icons, prompts, or a combination of the two. The default is to show the icons with the corresponding prompts above the icons (Both); however, when ideographic prompts are desired, the pager only displays either the prompts (Prompts) or the icons (Icons .)
Manual Delete	When this option is selected, you can manually delete one message at a time. Protected (locked) messages cannot be deleted.
Message Locking	When this option is selected, up to 10 personal messages can be protected (locked). When a message is locked, it cannot be automatically deleted by the pager.
Memory Retention	This option is also called Non-Volatile Memory. If selected, the pager retains all message information when the pager is turned off and back on.
Delete All	All read, unprotected personal messages are deleted and moved to the first available memory slot. All read maildrop messages are deleted when selected.
Message Preview	With Yes selected, all messages can be previewed by moving the cursor left or right. The pager displays the first line (or source prompt) of each message. Eliminating reading the entire message
Auto Backlight	With Yes selected, the pager senses when it is in a dark environment. If in a dark environment and a button is pressed, the backlight automatically turns on.
End of Message Character	With Yes selected, you to enter the end of message character. Valid selections are: 00-7F
Address Decode Errors	Allows the setting of allowable detected errors in Address Codewords. Settings are 0, 1 or 2 bits. 2 Bits is the default setting
Data Decode Errors	Allows the setting of allowable detected errors in Message Codewords. Settings are 0, 1 or 2 bits. 2 Bits is the default setting
Retry after SC Fail	This parameter determines how long the pager continues to decode CWs if a Sync CW is missed. Settings are Disable, 1 or 2.

More Features

This screen shows additional custom code-plug-selectable features available with the Product Family Elegant and Legend pager.





Need to update this screen shot!!


- **Shortcuts**

Toolbar:



Press  to program the pager.

Press  to program the pager.

Press  to return to the Main menu.

Keys:

F1-Help | F2-Program Pager | F9-Set To Defaults | F10-Exit | F11-Prev | F12-Next



Not all of the options are available on all pagers.

Field Name	Description
Enable Battery Gauge	With Yes selected, the battery gauge indicator is displayed in different levels on the pager. Valid indicators are: No Yes
Battery Gauge Level-High 1.43v	This value represents the battery voltage level necessary for the battery gauge to display a full battery. If the battery voltage is higher or equal to this value , the full battery gauge icon is displayed. Valid selections are: 1.63V, 1.58V,1.53V, 1.48V, 1.43V, 1.39V, 1.34V, 1.29V, 1.24V, 1.19V, 1.14V, 1.09V, 1.05V, 1.00V, 0.95V, and 0.90V. The High level must be greater than the Med level, and the Med level must be greater than the Low level. None of the levels can be equal to each other.
Battery Gauge Level -Med 1.39v	This value represents the battery voltage level necessary for the battery gauge to display a full battery. If the battery voltage is higher or equal to this value , the full battery gauge icon is displayed. Valid selections are: 1.63V, 1.58V,1.53V, 1.48V, 1.43V, 1.39V, 1.34V, 1.29V, 1.24V, 1.19V, 1.14V, 1.09V, 1.05V, 1.00V, 0.95V, and 0.90V. The High level must be greater than the Med level, and the Med level must be greater than the Low level. None of the levels can be equal to each other.
Battery Gauge Level -Low 1.29v	This value represents the battery voltage level necessary for the battery gauge to display a full battery. If the battery voltage is higher or equal to this value , the full battery gauge icon is displayed. Valid selections are: 1.63V, 1.58V,1.53V, 1.48V, 1.43V, 1.39V, 1.34V, 1.29V, 1.24V, 1.19V, 1.14V, 1.09V, 1.05V, 1.00V, 0.95V, and 0.90V. The High level must be greater than the Med level, and the Med level must be greater than the Low level. None of the levels can be equal to each other.
Periodic Low Battery Check	The low battery periodic check is based upon the selected value .Valid selections are: None and from 1hr to 15 hrs (in hourly increments).
Show Memory Full Prompt	With Yes selected, the pager displays the memory full prompt and icon. With No selected, only the icon is displayed.
Zoom	This field determines whether the pager can enlarge the characters in the display to two times their normal size. The four-line pager looks like a two-line pager, increasing message visibility.
Stop Decode Msg With Tone Only	This option provides to stop decoding the sequential Message or Idle signals or not when the pager receives the "Tone Only" message. Valid selections are: No Yes

Field Name	Description
Default Zoom	The default values of zoom mode are 2 Line or 4 Line. Valid selections are: 4 Line 2 Line
12/24 Time Format	The default values of time format mode are 12 or 24 hour. Valid selections are: 24 12
Turn On Pager	When the pager is entering a power off mode, 2 options to set the power up key, read key, can be selected from Click and 2 sec. Valid selections are: Click 2 Sec
User Selectable Duty Source	This option allows users to choose specific sources on their own when the On, Off Duty Mode is selected as On. Valid selections are: No Yes

Technical Description

The Product Family Elegant and Legend Pager Mechanical Interface is a passive Inter connection between the NRN8815 Programming Interface and the Product Family Elegant and Legend pager. The fixture has a receptacle (J1) that accepts the RJ-11 type plug of the coiled cable from the Programming Interface. Programming information is sent through the spring-loaded pins that make the appropriate contacts in the Product Family Elegant and Legend pager.



Use only the Unication -supplied cable for connection between the Programming Interface and the Pager Mechanical Interface. Use of non-approved cables can result in improper operation and/or incorrect programming of the pager.

Programming information is sent to the Product Family Elegant and Legend pager from the Programming Interface through the coiled cable. The operation of the Programming Interface is described in the manual (6881010B39) provided with it. There are no active devices in the Product Family Elegant and Legend Pager Mechanical Interface. A schematic diagram of the signal paths is shown in Figure 2.

Maintenance Information

Maintenance of the Product Family Elegant and Legend Pager Mechanical Interface consists of keeping the spring-loaded contacts clean and making sure the RJ-11 plugs are properly seated in the receptacle on the Pager Mechanical Interface and the Programming Interface.

The contacts can be cleaned with a soft, dry cloth. Do not use any solvents to clean the contacts or the outside of the interface. If necessary, a damp (not wet) cloth can be used to clean the outside of the fixture. Do not immerse in water or other liquid. In case of erratic operation, inspect the coiled cable between the Programming Interface and the Pager Mechanical Interface. If it appears to be damaged, or the contacts on the plug at either end appear weak or damaged, replace the cable.

Parts Replacement

When ordering replacement parts or equipment information, complete identification numbers must be included. This applies to all components, kits, and chassis. If the component part number is not known, the order must include the number of the chassis or kit number of which it is a part. If the identical replacement part is not locally available, check the parts list for the proper Unication part number and order the part from the nearest Unication replacement parts depot, listed below.

TELEPHONE ORDERS

Replacement Parts, Manuals :

Call: (886) 2-22999678

CUSTOMER SERVICE

Replacement Parts, Manuals :

In North America
Call: 817-385-6155
In Asia
Call

Support:

Call: 817-385-6155

Parts Identification and Customer Technical Support:

In North America
Call: (817-385-6155
In Asia
Call

:

Exploded View Diagram and Parts List

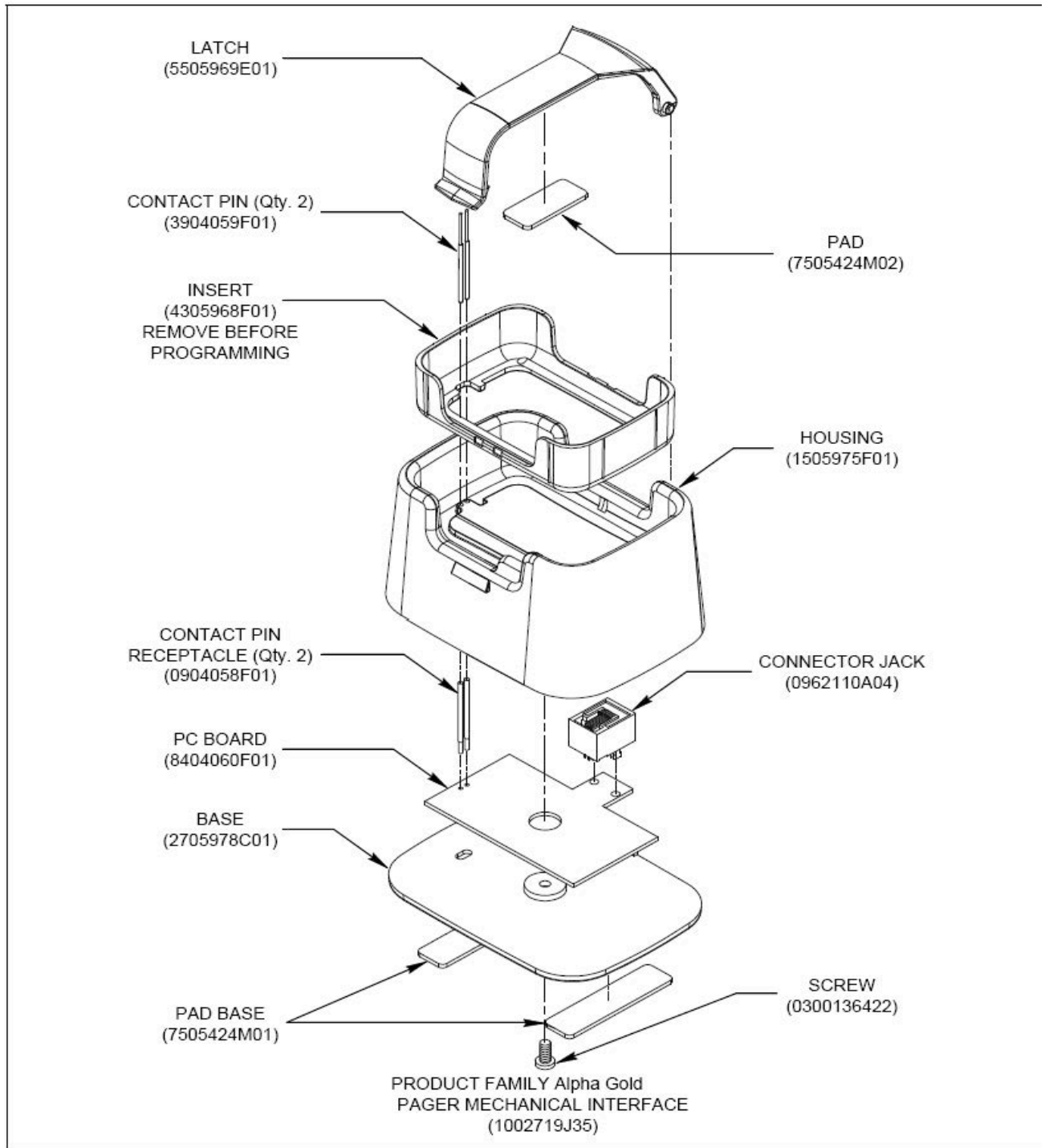


Figure 5. Exploded View Diagram

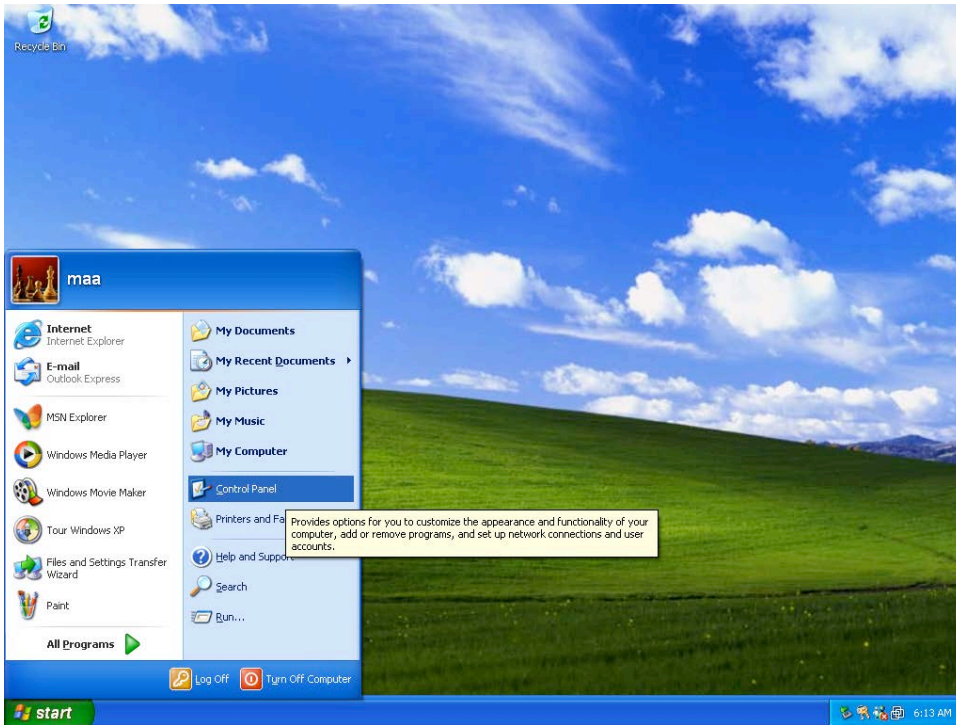
Troubleshooting Guide

Field Name	Description
Does Product Family Alpha Gold programming software run on COM3 ~ COM8?	Yes, as long as no other device is connected to these ports.
When reading a pager, either the mouse no longer works or communication with the pager cannot be re-established.	This error often results from setting an asynchronous mouse to the same communication port interrupt used for the programming software. It is recommended that one of the communication ports be changed. Check that both devices are not set to even. Check that both devices are not set to odd. If either of these conditions exist, reset one device opposite of the other port.
The programming software reports a Data Communications error and never reads the pager.	Check the Programming Interface cable for correct installation. This is usually a 9- or 25-pin male connector on the back of the computer. Make sure the power supply cable is connected to a power source. Make sure the pager is in the ON position and firmly seated in the Mechanical Interface. (The red LED is illuminated.) Check if there are any RAM-resident programs running.
Pager does not function after programming has been performed.	Make sure the capcode has not been changed. Check all functions; ensure the entries have not been programmed as either inactive or incorrectly. Make sure the Data Inversion parameter has not been changed.

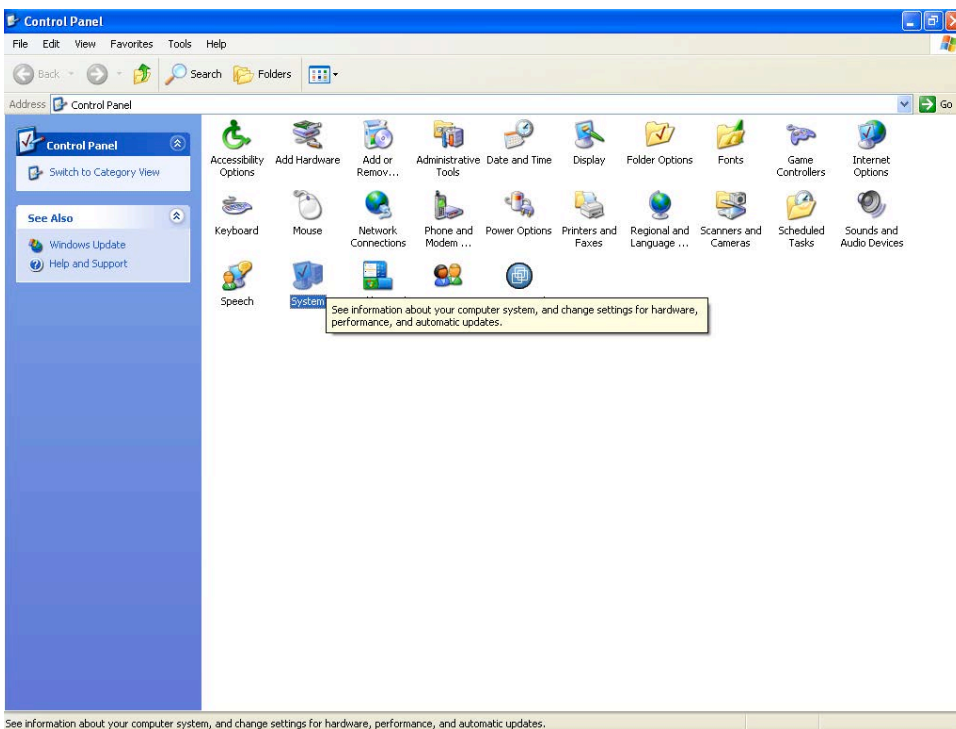
Q&A

How to check available COM port for PPS?

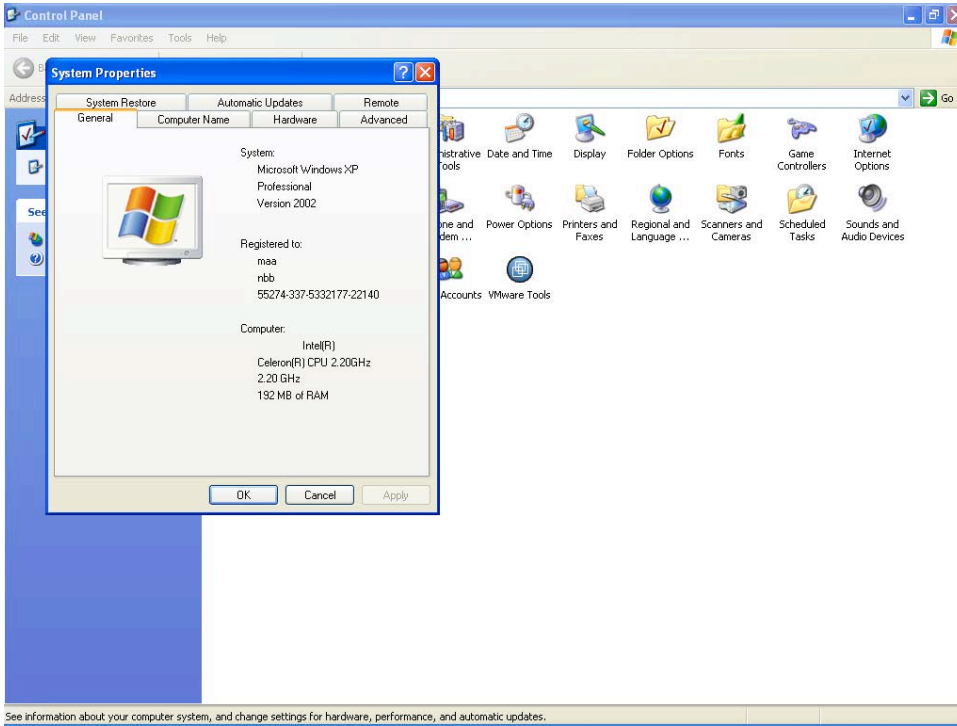
Ans:



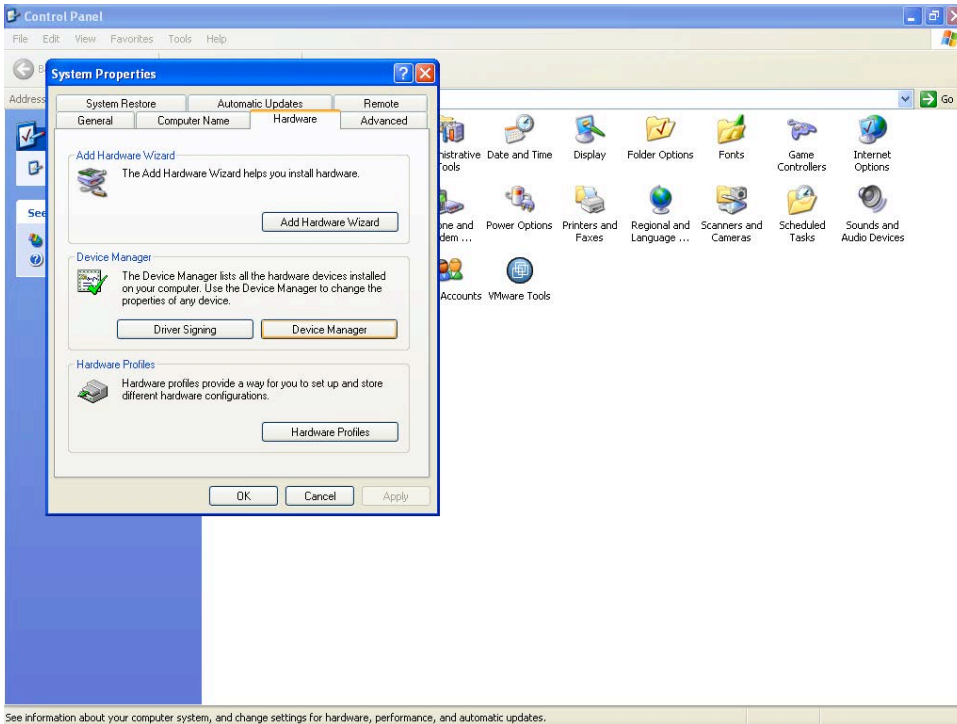
Press "start" button then click "Control Panel" button to display Control Panel



Click "System" ICON to display System Properties

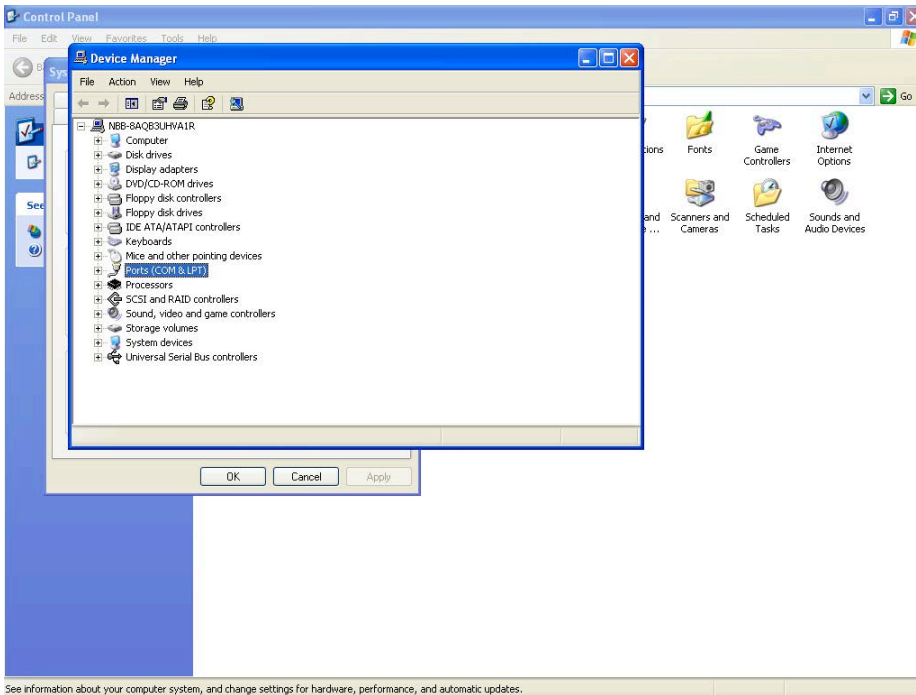


See information about your computer system, and change settings for hardware, performance, and automatic updates.

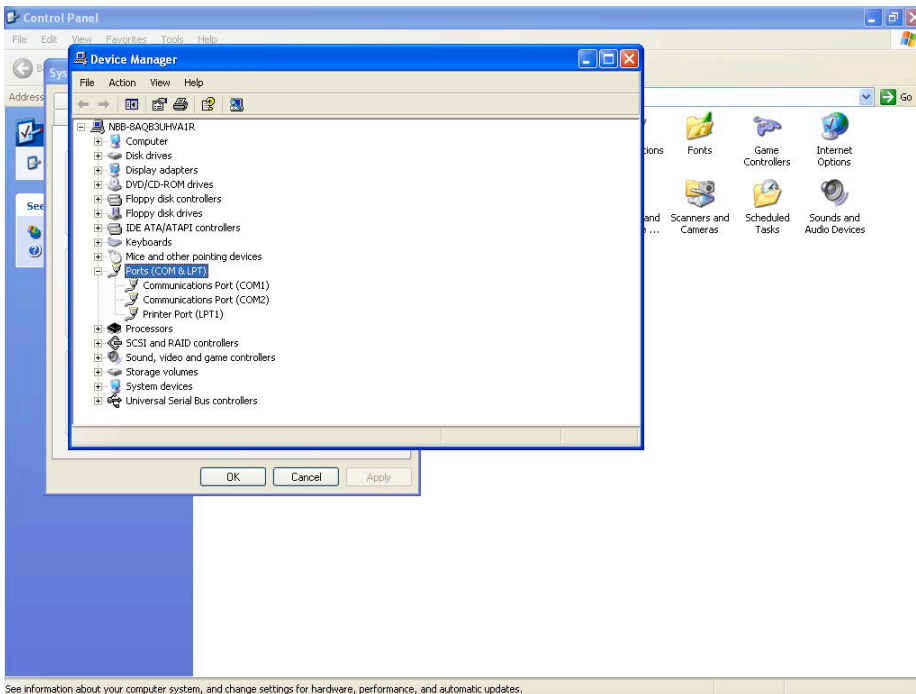


See information about your computer system, and change settings for hardware, performance, and automatic updates.

Select "Hardware" button, then press "Device Manager" button to display "Device Manager" box



Press "Ports(COM & LPT)" button to expand "Ports (COM & LPT)" list



The communication port(COM X)(example COM1,COM2) was windows support COM port.

Press "X" then click "OK"

Glossary

Archive File

This is a file containing the current pager configuration information. This file is created from the Save Codeplug Archive command on the File Menu.

Click, Clicking

Click is the action of using the mouse to select an item by pressing the mouse button once, while the item is highlighted or while the cursor is on the item.

Default

A default is information automatically generated by the software program. Basically, any field that contains a preset selection is called a default. Default information can be changed as necessary. It is used to ensure that a basic entry is present for required information.

Desktop

The desktop is the main working area of the window which has the menu bar at the top and the status bar at the bottom of the screen.

Field

An area on the screen where information is entered.

Highlight Bar

The cursor is not represented by a single character space, but instead by a long contrasting bar of color or gray scale.

Menu Bar

The bar across the top of the desktop containing the names of several pull-down menus.

Pager Clock Crystal

A crystal used inside the pager to control the time-keeping function.

Pull-down Menu

A menu that opens when the menu title or topic is selected. You can select it by clicking on the title and "pulling down" on the menu, hence its name.

Sequential

Refers to programming more than one pager.

Toggle

To select/deselect an option or feature

Appendix

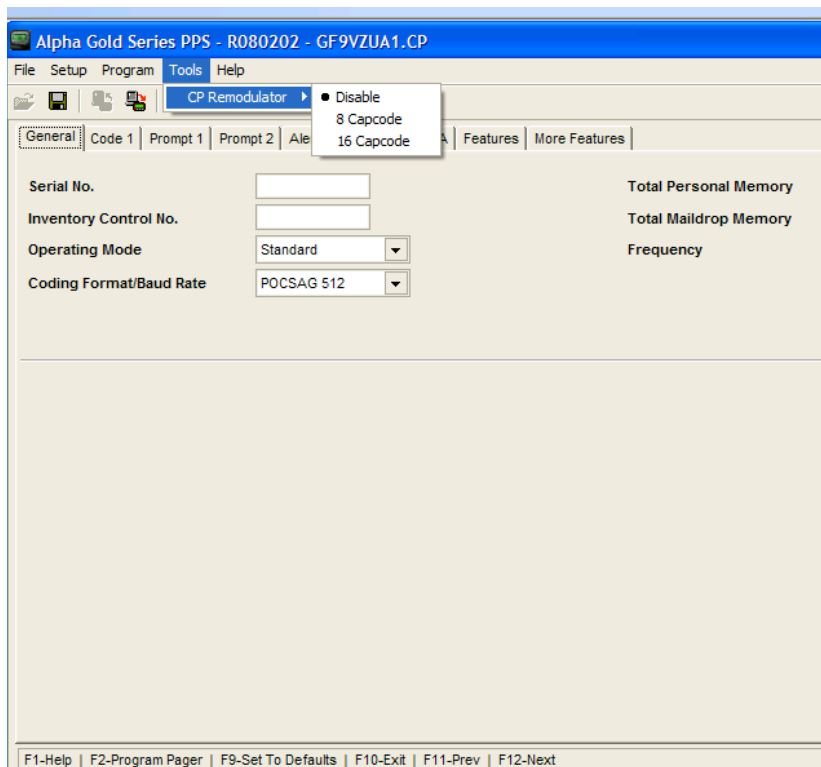
This Windows based PPS and Elegant and Legend pagers have a number of new features and they will be described in this Appendix

I. Converting 4 RIC pager Code Plug Files to the 8/16 RIC format

Any GOLD pager Code Plug File can be read with this PPS and be converted to be used for programming the Elegant or Legend. When the GOLD codeplug file is read the common parameters are set per the 4 RIC codeplug file. The User, will then have to set the Elegant or Legend specific parameters per their application.

The following is the process fro converting older codeplug files;

1. Read the codeplug file by depressing **F8**
2. Once the codeplug file is loaded, depress the Tools on the Menu Bar. The following choices are available;



For Elegant, choose 8 Capcode and 16 Capcode for the Legend.

II. Setting the Alerts

1. Fixed Alert Settings using the PPS

If the Alerts are to be set using the PPS, go to the "Alert" screen and set the "User Selectable Alerts" setting to "No". Then go back to the Code 1-4 screens and select the Alert setting for each Functional Address.

2. User Selectable Alert Settings

If the User is to select, using the pager's front panel keybuttons, the Alerts for each Functional Address the following settings are required;

- i. On the "Code" screens, set the "Fix Alert" settings to all "N".
- ii. On the "Alert" screen, set the "User Selectable Alerts" setting to "Yes".

3. A Mix of Fixed and User Selectable Alert Settings

There may be specific Functional Addresses that the User will not be allowed to change the Alert setting.

To accomplish this:

- i. On the "Code" screens, set the "Fixed Alert" setting to "N" (i.e., User Selectable) or "Y" (i.e., fixed) for the appropriate Functional Addresses
- ii. On the "Alert" screen, set the "User Selectable Alerts" to "Yes".

III. On/Off Duty Settings

The On/Off Duty setting for each Functional Address can be programmed using the PPS SW so it is fixed or it is User selectable. Below is a brief description.

1. PPS Selectable Only

- i. On the "Code" screens set the "On/Off Duty (Y,N)" setting to "Y" for each Functional Address that will be controlled with the On/Off Duty Pager Menu setting.
- ii. On the "More Features" screen, set the "User Selectable Duty Source" setting to "No"

2. User Selectable Only

- i. On the "Code" screens set the "On/Off Duty (Y,N)" setting to "Y" for each Functional Address that will be controlled with the On/Off Duty Pager Menu setting.
- ii. On the "More Features" screen, set the "User Selectable Duty Source" setting to "Yes"